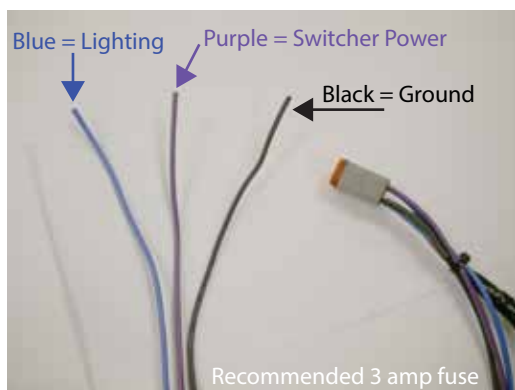


Livorsi Position Indication Gauge Instructions

GAUGE CONNECTIONS AND CALIBRATION

Connect gauge harness using supplied wiring diagram (Figure 1). Recommended 3 amp fuse. Remove access cap located on back of gauge housing (Figure 2). Locate adjustment pots (Figure 3). Apply power to boat system and turn gauge on. Fully lower device (jack plate, trim tab, etc). Adjust low set point pot as needed. Fully raise device (jack plate, trim tab, etc). Adjust high set point pot as needed. Repeat as necessary until pointer is within low set point window and high point set point window (Figure 4). Install gauge into dash panel and secure with supplied mounting bracket. Tighten mounting bracket nuts to five (5) inch pounds maximum. Secure any remaining wiring. The gauge is ready for use.



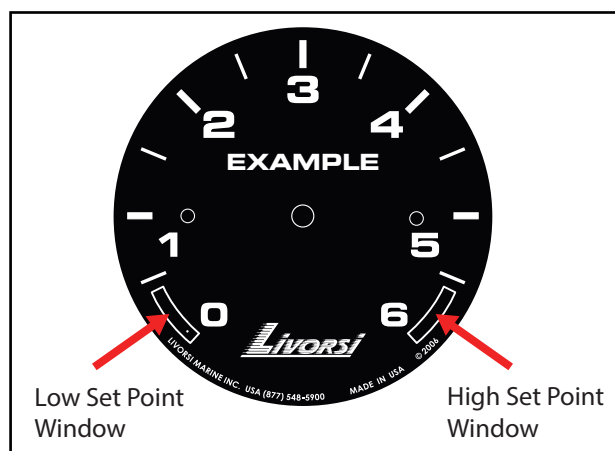
(Figure 1)



(Figure 2)



(Figure 3)



(Figure 4)