

# Gauge Styles

---

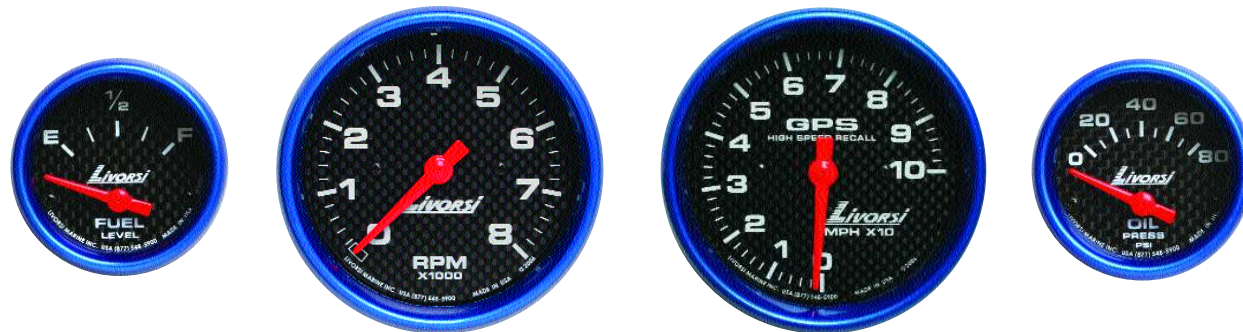


## Industrial

dials: black or white

rims: SAE rim

Page 28



## Mega & Race

dials: black, platinum,  
carbon fiber, silver  
carbon fiber or white

rims: Mega or Race

Page 34



## Vantage View

dials: platinum, white or black

rims: Mega or Race

Page 50



# Color Options

## Carbon Fiber

## Rim Styles

## Powder Coat Colors

## Dials

### Dash Panels



blue carbon fiber



red carbon fiber



carbon Fiber  
CF



silver carbon fiber  
SF



Race Rim  
RR



Mega Rim  
MR



SAE Rim



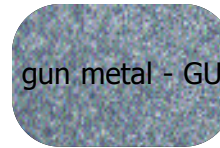
\* black - BK



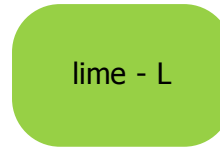
blue - BL



black  
stardust -  
BS



gun metal - GU



lime - L



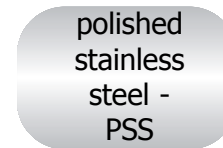
mustard - MU



orange - O



platinum - PL



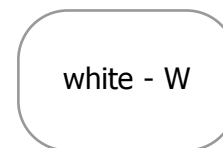
polished  
stainless  
steel -  
PSS



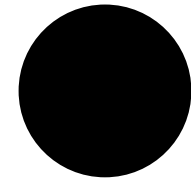
purple - PU



red - R



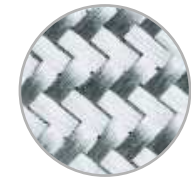
white - W



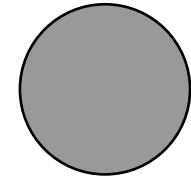
\* black- BK



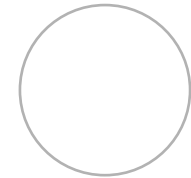
carbon fiber- CF



silver carbon fiber- SF



platinum- PL



white- W

\* Black gloss finish available upon request

# Industrial Series

## Analog Gauges

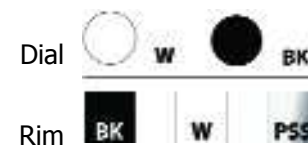
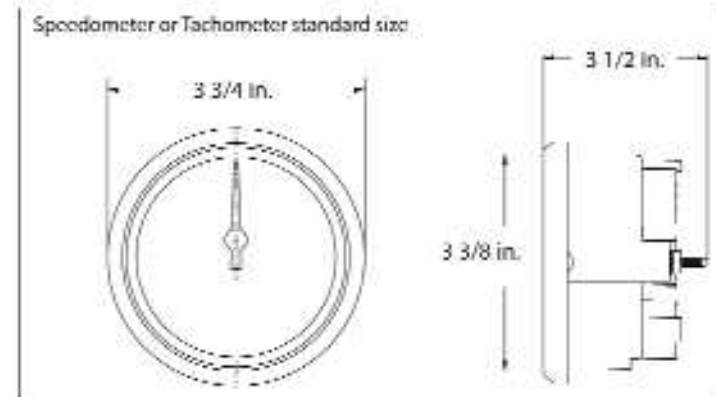
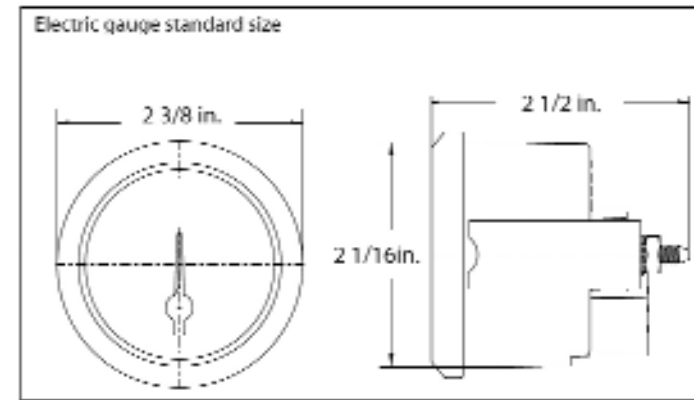
The Industrial series was designed with the industrial equipment, workboats, pleasure boats and vehicles in mind.

Industrial Series gauges are easy to install with the use of plug-in Deutsch connectors that significantly decrease rigging time. The plug-in connectors are waterproof and resist salt corrosion and dust intrusion.

These gauges feature fade resistant powder coated pointers; SAE rims in a powder coat finish or in polished stainless steel. These finishes protect the rims and make them extremely resilient in harsh weather environments.

### Industrial Series Features

- Standard gauge sizes
- Plug-in connectors are waterproof and resist salt corrosion
- Gauges are encased in non-ferrous hardware
- Red LED lighting is standard
- Available in 12 or 24 volt system
- Powder coated pointers are fade resistant
- SAE rims in flat black, white or stainless steel



# Industrial Series

## Tachometers

Gas tachometers are compatible with:  
4, 6, & 8 cylinder, V-10 & Merc O/B 6 pulse/12 pole

Tachometers - Gas		
Description	Base Part Number	Requires
6,000 RPM	DCS6000	DCH harness
8,000 RPM	DCS8000	DCH harness
10,000 RPM	DCS10000	DCH harness
12,000 RPM	DCS12000	DCH harness



6,000 RPM



8,000 RPM



10,000 RPM



12,000 RPM

Tachometers- Diesel 4000 RPM		
Description	Base Part Number	Requires
alt driven	DC4000DA	DCH harness
mag probe driven	DC4000MPD	DCH harness
mechanical signal generator driven	DC4000MSGD	DCH harness

Tachometer Hardware	
Description	Part Number
DCH harness 12V 24" lead	DCH
DCH harness 24V 24" lead	DCH24
DCH harness 12V w/ tach filter, reduces needle bounce, 24" lead	DCTFH



4,000 RPM

# Industrial Series

## GPS Speedometers

- Livorsi GPS Speedometers require a NMEA 0183 antenna/receiver.



50 MPH



80 MPH



100 MPH



120 MPH



GPSSQ3 antenna  
 - Mounts with a 1/4" screw  
 - Dimensions:  
 2 3/4" L x 2 3/8" W x 7/8" H



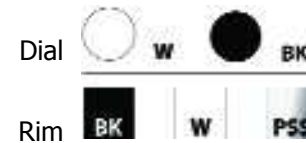
140 MPH



160 MPH



180 MPH



Description	Base Part Number	Notes
50 MPH	GPSS50	For a GPS Kit, add the letter "K" after the MPH.
80 MPH	GPSS80	
100 MPH	GPSS100	
120 MPH	GPSS120	
140 MPH	GPSS140	
160 MPH	GPSS160	
180 MPH	GPSS180	
GPS antenna	GPSSQ3	

### Included with GPS Speedometer

- speedometer
- memory recall
- harness

### Included with GPS Speedometer Kit

- speedometer
- memory recall
- harness
- antenna

cutout size	overall size
3 3/8"	3 3/4"

# Industrial Series

## Mechanical Gauges



boost 0-35 PSI



fuel pressure 0-15 PSI



fuel pressure 0-100 PSI



oil pressure 0-100 PSI



vacuum boost



water pressure 0-35 PSI



water pressure 0-60 PSI

cutout size	overall size
2 1/16"	2 3/8"

Description	Base Part Number	Requires
Boost 0-35 PSI	DCSMB35	hose kit
Fuel Pressure 0-15 PSI	DCSMFP	fuel hoses n/a
Fuel Pressure 0-100 PSI	DCSMFP100	
Oil Pressure 0-100 PSI	DCSMOP	hose kit
Vacuum/Boost 30 in hg/boost20	DCSMVB	hose kit
Water Pressure 0-35 PSI	DCSMWP	hose kit
Water Pressure 0-60 PSI	DCSMWP60	hose kit
Hose Kits - not to be used with fuel		
10 feet of hose and fittings	HKA	
25 feet of hose and fittings	HK	



hose kit

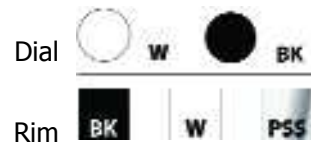
# Industrial Series

## Electric Gauges

- These electric gauges require the use of a four pin connector wire harness (unless otherwise noted) that we call a DCH harness.
- We offer these harnesses pre-assembled with labeled wire leads, 24 inches in length.



cutout size	overall size
2 1/16"	2 3/8"



Description	Base Part Number	Requires
Boost 60 PSI	DCSB60	-
Fuel Level 0-90 OHMS	DCSFLGM	DCH/DCH24, fuel level sender
Fuel Level 240-33 OHMS	DCSFL	DCH/DCH24, fuel level sender
Fuel Pressure 0-15 PSI	DCSFP	DCH/DCH24, GSFP/WP
Fuel Pressure 0-90 PSI	DCSFP90	DCH/DCH24, GSFP60/90
Hourmeter	HM *	-
Oil Pressure 0-80 PSI	DCSOP80	DCH/DCH24, GSOP80
Oil Temperature 140-340° F	DCSOT	DCH/DCH24, GSOT1/8
Transmission Temp 140-340° F	DCSTT	DCH/DCH24, GSOT1/8
Trimmer Merc & Yamaha 10-90 OHMS	DCSTMM	DCH/DCH24
Trimmer OMC 88-1 OHMS	DCSTMO	DCH/DCH24
Voltmeter 8-18V	DCSVM	DCH/DCH24
Voltmeter 18-32V	DCSVM24	DCH/DCH24
Water Level	DCSWL	DCH/DCH24, water level sender
Water Temperature 100-250° F	DCSWTA	DCH/DCH24, GSOT1/8
Water Temperature 100-280° F	DCSWT	DCH/DCH24, GSWT1/8
DCH Harnesses- pre-assembled		
12 volt system, 24 inch leads	DCH	
24 volt system, 24 inch leads	DCH24	

\* Note: Available with Mega or Race Rim only.



boost 60 PSI



fuel level

# Industrial Series

## Electric Gauges



fuel pressure 0-15 PSI



fuel pressure 0-90 PSI



hourmeter \*



oil pressure 0-80 PSI



oil temperature 140-340° F



transmission temp 140-340° F



trimmer



voltmeter 8-18 V



voltmeter 8-32 V



water level



water temperature 100-250° F



water temperature 100-280° F



# Mega & Race Series

## Analog Gauges

### Features

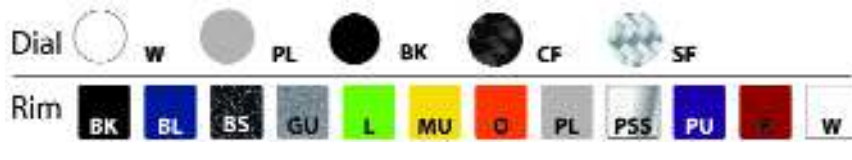
- Standard size or oversize
- Plug-in connectors are waterproof and resist salt corrosion
- Gauges are encased in non-ferrous hardware
- Red LED lighting is standard; for easy viewing in low light conditions
- Available in 12 or 24 volt system
- Your choice of rim style: Mega or Race



Mega Rim

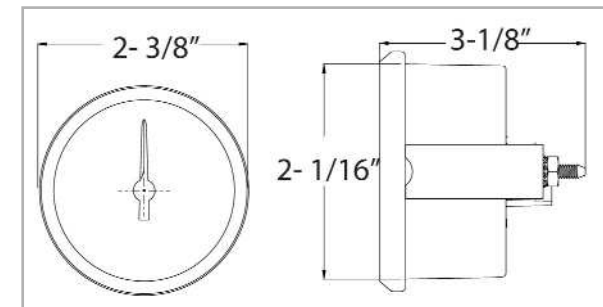
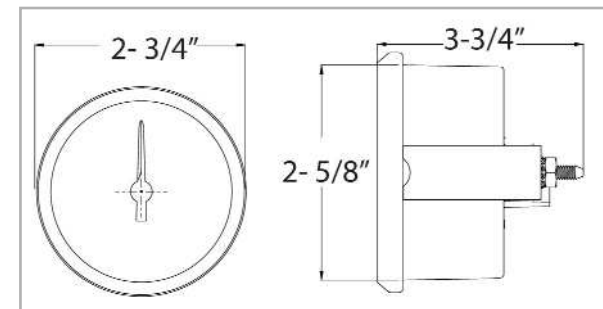
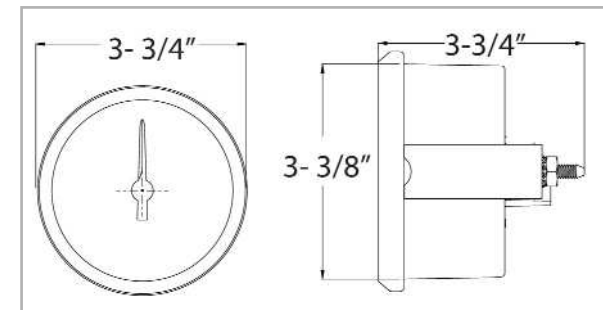
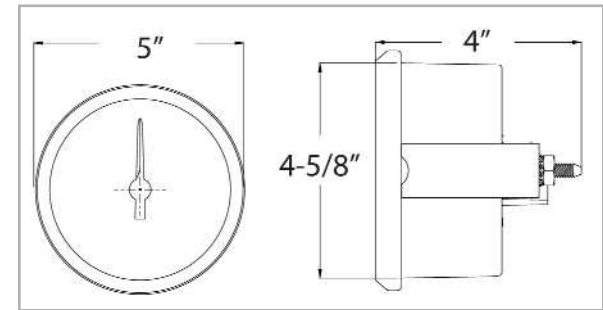


Race Rim



### Custom Options

- Dial color
- Needle color
- Private label
- Your custom graphics or custom paint



# Mega & Race Series

## Tachometers

Gas Tachometers are compatible with:  
4, 6, & 8 cylinder, V-10, Merc O/B, 6 pulse/12 pole

Gas Tachometers				
Description	Part Number			Requires
	2 5/8"	3 3/8"	4 5/8"	
6,000 RPM	-	DCS6000	DCL6000	DCH harness
8,000 RPM	MT8000	DCS8000	DCL8000	DCH harness
10,000 RPM	-	DCS10000	DCL10000	DCH harness
12,000 RPM	-	DCS12000	-	DCH harness

Diesel Tachometers			
Description	Part Number		Requires
	3 3/8"		
4,000 RPM alt driven	DC4000 DA		DCH harness
4,000 RPM mag probe driven	DC4000 MPD		DCH harness
4,000 RPM mech signal generator driven	DC4000 MSGD		DCH harness

### 4 Pin Connector & Wire Harness

- 24 inches in length
- Pre-assembled and labeled

Tachometer Hardware	
Description	Part Number
DCH harness 12V 24" lead	DCH
DCH harness 24V 24" lead	DCH24
DCH harness 12V w/ tach filter, reduces needle bounce	DCTFH



6000 RPM



8000 RPM



10000 RPM



12000 RPM



4000 RPM



DCH

# Mega & Race Series

## GPS Speedometers

Purchase GPS Speedometer only, you get:

- speedometer
- memory recall
- harness for power, ground and back lighting

GPSSQ310X antenna

- Mounts with a 1/4" screw
- Dimensions: 2 3/4" L x 2 3/8" W x 7/8" H
- Fast 10 Hz 10x per second update
- 4 ft harness and ring terminals

GPS Speedometer Kit includes

- speedometer
- memory recall
- harness for power, ground and back lighting
- NMEA 0183 antenna - GPSSQ310X



### Build your part number:



GPS | S | 50 | K | PL | PL | RR  
 size | speed | kit | dial color | rim color | rim style

Description	Part Number		Requires
	3 3/8"	4 5/8"	
50 MPH	GPSS50	GPSL50	For a GPS Kit, add the letter "K" after the MPH.
60 MPH	GPSS60	GPSL60	
80 MPH	GPSS80	GPSL80	
100 MPH	GPSS100	GPSL100	
120 MPH	GPSS120	GPSL120	
140 MPH	GPSS140	GPSL140	
160 MPH	GPSS160	GPSL160	
180 MPH	GPSS180	GPSL180	
200 MPH	GPSS200	GPSL200	
GPS antenna	GPSSQ310X	NMEA 0183 antenna - square body	

# Mega & Race Series

GPS Speedometers



50 MPH



60 MPH



80 MPH



100 MPH



120 MPH



140 MPH



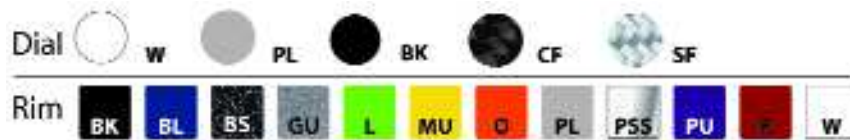
160 MPH



180 MPH



200 MPH



# Mega & Race Series

## Speedometers



DCMS60



DCMS80

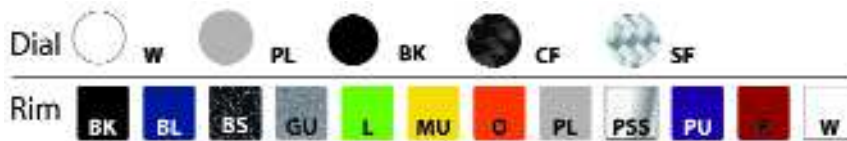


DCMS100

Visit [www.livorsi.com](http://www.livorsi.com)  
for a list of pitot tubes.

### Dry Speedometers

Description	Part Number		Requires
	3 3/8"	4 5/8"	
60 MPH	DCMS60		pitot tube, hose & mounts  Add "K1" for a kit
80 MPH	DCMS80	DCML80	
100 MPH	DCMS100	DCML100	



### Speedometer Hoses

Description	Part Number
1/8" ID push on high pressure	GCH1/8
1/4" ID push on high pressure	GCH1/4

You may request dials in any of our powdercoat colors, extra fees apply.



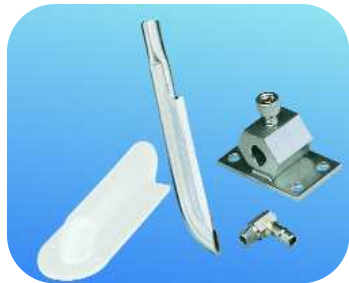
# Mechanical Speedometer Hardware

## Mechanical Speedometers



### Recoil Blade Kickup

Description	Part Number
blade only 5"	GCRB
blade fitting 1/4" ID hose	GCF8
blade fitting 1/8" ID hose	GCPM1/8



### Low Profile Blade Assembly

Description	Part Number
regular	GCRB1A
90° angle	GCRB1A90



### Blade Assembly Standard

Description	Part Number
universal bolt pattern	GCM1A
Mercury bolt pattern	GCM2A



### Mercury Reverse Mount Assembly

Description	Part Number
with fittings	GLRMA
with out fittings	GLRM



### Kick Up Mount

Description	Part Number
1/4" ID hose	GLM1A
1/8" ID hose	GLM1A1/8

### Blades

standard blade 7"	GCT1
blade 5" for GCRB1A / RBM2A	GCRB

### Thru hull fittings

2" x 1/8" NPT	THF21/8
4" X 1/8" NPT	THF41/8
90° fitting 1/8" NPT male push lock x 1/4" ID push lock	GCF6

### Blade mounts

tube or blade mount	GCM3
---------------------	------

### Hoses

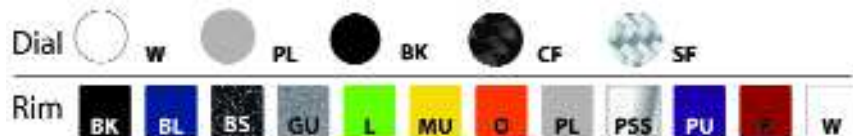
1/8" ID push on high pressure	GCH1/8
1/4" ID push on high pressure	GCH1/4

# Mega & Race Series

## Electric Gauges

- These electric gauges require the use of a four pin connector wire harness (unless otherwise noted) that we call a DCH harness.
- We offer these harnesses pre-assembled with labeled wire leads, 24 inches in length.

Description	Part Number		Requires
	2 1/16"	2 5/8"	
Clock	-	DCC	DCH harness
Fuel Level 0-90 ohms	DCSFLGM	DCFLGM	DCH, fuel level sender
Fuel Level 240-33 ohms	DCSFL	DCFL	DCH, fuel level sender
Fuel Pressure 0-15 PSI	DCSFP	DCFP	DCH, GSFP/WP
Fuel Pressure 0-90 PSI	DCSFP90	DCFP90	DCH, GSFP60/90
Hourmeter	HM	-	-
Oil Pressure 0-80 PSI	DCSOP80	DCOP80	DCH, GSOP80
Oil Pressure 0-100 PSI	DCSOP	DCOP	DCH, GSOP
Oil Temperature 140-340° F	DCSOT	DCOT	DCH, GSOT1/8
Transmission Temp 140-340° F	DCSTT	DCTT	DCH, GSOT1/8
Trimmer Merc & Yamaha 10-90 ohms	DCSTMM	DCTMM	DCH
Trimmer OMC 88-1 ohms	DCSTMO	DCTMO	DCH
Voltmeter 8-18V	DCSVM	DCVM	DCH
Water Level	DCSWL	DCWL	DCH
Water Temperature 100-250° F	DCSWTA	DCWTA	DCH, GSOT1/8
Water Temperature 100-280° F	DCSWT	DCWT	DCH, GSWT1/8
<b>DCH Harnesses</b>			
12 volt system, 24 inch leads	DCH		
24 volt system, 24 inch leads	DCH24		



# Mega & Race Series

## Electric Gauges



clock



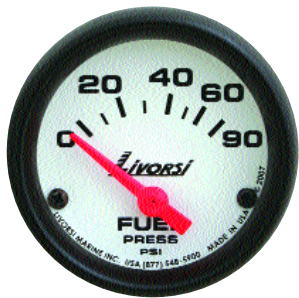
oil pressure 80 PSI



fuel level



fuel pressure 15 PSI



fuel pressure 90 PSI



hourmeter



oil pressure 100 PSI



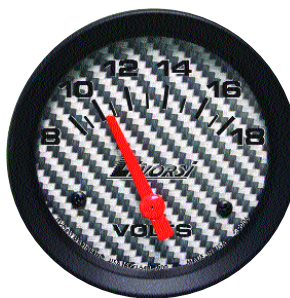
oil temperature



transmission temperature



trimmer



voltmeter



water level



water temperature 250 F



water temperature 280 F



# Mega & Race Series

## Mechanical Gauges

Description	Part Number		Requires
	2 1/16"	2 5/8"	
Boost 0-35 PSI	DCSMB35	DCMB35	hose kit
Fuel Pressure 0-15 PSI	DCSMFP	DCMFP	fuel hoses n/a
Fuel Pressure 0-100 PSI	DCSMFP100	DCMFP100	
Oil Pressure 0-100 PSI	DCSMOP	DCMOP	hose kit
Vacuum/Boost 30 in hg/boost 20	DCSMVB	DCMVB	hose kit
Water Pressure 0-35 PSI	DCSMWP	DCMWP	hose kit
Water Pressure 0-60 PSI	DCSMWP60	DCMWP60	hose kit



boost



fuel pressure 15 PSI



fuel pressure 100 PSI



oil pressure 100 PSI

### Hose Kit

- not for fuel
- use with mechanical gauges
- 1/8" ID

Description	Part Number
25 feet with fittings	HK
10 feet with fittings	HKA



vacuum boost



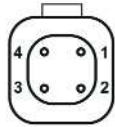
water pressure 35 PSI



water pressure 60 PSI

## 4 Pin Connector & Wire Harness

- 24 inches in length
- Pre-assembled and labeled



Pin # 1 = BLUE 12v+ illumination  
 Pin # 2 = VIOLET 12v+ ignition power  
 Pin # 3 = BLACK engine or battery ground  
 Pin # 4 = GREEN signal from sender



DCH Harness	Part Number
12 volt system	DCH
24 volt system	DCH24
12 volts w/ tach filter	DCTFH

Connector Parts	
Description	Part Number
2 Pin - mechanical lights	
2 pin connector plug	DC2CPLUG
2 pin connector wedge lock	DC2CWL
4 Pin - electrical gauges	
4 pin connector plug	DC4CPLUG
4 pin connector wedge lock	DC4CWL
8 Pin - power distribution	
8 pin connector plug	DC8CPLUG
8 pin connector wedge lock	DC8CWL
12 Pin - power distribution	
12 pin connector plug	DC12CPLUG
12 pin connector wedge lock	DC12CWL
dummy plug	DCDP
contacts for 16 gauge wire	DCC1416
Hand Crimper	DCHCS

Description	Part Number
Senders	
Fuel Pressure 0-60 PSI / 0-90 PSI	GSFP60/90
Fuel & Water Pressure 0-15 PSI	GSFP/WP
Isolated Ground for Water Temperature	GSWT1/8I
Oil Pressure 0-80 PSI	GSOP80
Oil Pressure 0-100 PSI	GSOP
Oil / Water Temperature 100-320°F	GSOT1/8
Water Temperature 100-250°F 1/8" thread	
Pressure 400 PSI	GSP400
Water Temperature- Merc OB Kit	GSWTM
Water Temperature 100-280°F 1/8" thread	GSWT1/8
Bushing Kit 1 /4", 3/8" and 1/2" fittings	GSBKK1
Hose Kit for Mechanical Gauges not to be used with fuel, 1/8 in ID	
10 feet of hose and fittings	HKA
25 feet of hose and fittings	HK

Description	Part Number
LED Wedge	
amber 12.8V	LEDWA
blue 12.8V	LEDWBL
green 12.8V	LEDWG
red 12.8V	LEDWRB
white 12.8V	LEDWW
Clamshells	
for 1/4" id hose black	GCCS1/4BK
for 1/4" id hose white	GCCS1/4W
for 1/2" id hose white	GCCS1/2W

# GPS Antennas

## GPS Antenna for Vantage View®

Part Number: GPSRAQ3VV

- Antenna is NMEA 0183 compliant
- 2 3/4" L x 2 3/8" W x 7/8" H
- Standard 1-second 1HZ update
- 4 ft harness and ring terminals
- Pre-terminated for quick connection to the Vantage View Master Harness
- It is recommended to use this model number for full compliance with Livorsi Vantage View® speedometers



## GPS Antenna

Part Number: GPSSQ3

- Antenna is NMEA 0183 compliant
- 2 3/4" L x 2 3/8" W x 7/8" H
- Standard 1-second 1HZ update
- 4 ft harness and ring terminals
- It is recommended to use this model number for full compliance with Livorsi GPS speedometers
- Compatible with SmartCraft®



## GPS Antenna for non-GPS speedometers

Part Number: GPSESQ3

- Antenna is NMEA 0183 compliant
- 2 3/4" L x 2 3/8" W x 7/8" H
- Fast 10 Hz 10x update -8/16 pulse output
- 4 ft harness and ring terminals
- For use with existing automotive or commercial electric speedos (non-GPS speedo heads)

## GPS Antenna with 10X per second update

Part Number: GPSSQ310X

- Antenna is NMEA 0183 compliant
- 2 3/4" L x 2 3/8" W x 7/8" H
- Fast 10 Hz 10x per second update
- 4 ft harness and ring terminals
- For use with Livorsi GPS Speedometers and Livorsi GPS Speedometers with Odometer

# GPS Speedometer w/ Odometer

For automotive or marine applications, this stand alone GPS speedometer is a digital gauge with an analog readout and a built in LCD odometer. Designed to be hassle free, this gauge relies on GPS satellite signals to display accurate speed and miles traveled, so there is no need to calibrate this gauge with gear ratios or tire size.

## Gauge Features

- Digital odometer helps you determine your GPM
- Eliminates the need for cables
- No calibration required
- LCD displays odometer and 3 resettable trip odometers
- 10x update for accurate readings
- 120 MPH or 160 MPH

## Gauge Kit Includes:

- Gauge head
- GPS antenna with 10 Hz 10x update
- Switch
- Harness
- Mounting hardware

cutout size	overall size
3 3/8"	3 3/4"
4 5/8"	5"



Description	Gauge Kit Part Number
	3 3/8" cutout
120 MPH	GPSSO120K + dial color + rim color + style
160 MPH	GPSSO160K + dial color + rim color + style
	4 5/8" cutout
120 MPH	GPSLO120K + dial color + rim color + style
160 MPH	GPSLO160K + dial color + rim color + style



## GPS Antenna 10X Update

- Antenna is NMEA 0183 compliant
- 2 3/4" L x 2 3/8" W x 7/8" H
- Fast 10 Hz 10x update
- 4 ft harness and ring terminals

Part Number: GPSSQ310X



# Depth Finder Gauge

## Gauge Features

- Larger LCD digits
- Algorithmic programming
- Instant depth updates
- Easy touch programming
- Keel offset
- English & Metric readings
- Dual depth alarms
- Advanced warning system
- Memory retention
- Polarized LCD
- Plug & Play connectors
- Red LED alarm light



Shoot Thru  
(uses epoxy)



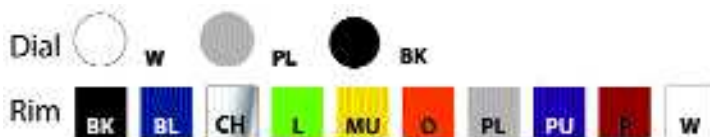
Transom

## Gauges Specs

- 1 7/8" cutout, 2 1/2" overall
- Green backlighting
- 11-14Vdc
- Readout: min. -2.5 feet / max. 200 feet
- Red LED and blinking LCD icons for alarms
- Transducers have 30" lead

## Gauge Kit Includes

- gauge
- transducer
- mounting brackets
- epoxy (for shoot thru only)



Description	Part Number
Depth Only Gauge	
head only	DFG + color rim
Kit - Gauge and shoot thru transducer	DFGKST + color rim
Kit - Gauge and transom mount transducer	DFGKTR + color rim
Transducers - Depth Only	
shoot thru transducer	TST
transom mount transducer	TTR
Depth - Air - Water Gauge	
head only	DISCONTINUED
Kit - Gauge and Transom mount transducer	DISCONTINUED
Transducers - Depth Air Water	
transom mount transducer	DISCONTINUED

# Dash Panels



Our panels are available in real carbon fiber.

Send us a dimensional drawing, or your old panel and we'll recreate it.

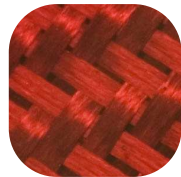
Toll Free: 877.548.5900

P: 847.752.2700

## Carbon Fiber Options



blue



red



carbon  
Fiber



silver  
carbon  
fiber

# Raw Water Flow System

Safe guard your cooling system from costly damage with Livorsi's Raw Water Flow System

The Raw Water Flow system indicates your engine's water flow volume. This system warns you of a potential problem or danger that would otherwise not be indicated by a water pressure gauge alone, thus preventing cosmetic and structural damage to expensive exhaust headers, intercoolers and other cooling systems.

## What is Water Flow?

Water flow is a real indication of water surging through a cooling system such as: exhaust headers, sea strainers, impellers, Gen sets, intercoolers and any other marine or industrial applications that utilize water flow.

## Why You Need It

Don't confuse water flow with water pressure; as many OEM engine manufacturers measure water pressure in different areas of the motor. This number may not be telling you the real story of water flow. Your water pressure can be constant from the first day you bought your new boat.

The danger may be lurking in the water flow which could be caused by

- a plugged heat exchanger
- extensive debris build-up in the intercooler or sea strainer
- a kinked hose
- worn impeller
- water pickups not collecting enough water for cooling system

These may be the culprits causing the good water pressure reading, when in actuality there is poor water flow. Low water flow results in; cosmetic and structural damage to expensive exhaust headers caused by burned impellers and/or the clogging and damage of intercoolers or strainers.



The Raw Water Flow System prevents this from happening



# Raw Water Flow System

## How It Works

Calibration is set at idle and at wide open throttle (WOT). This will generate the cooling system's normal operating range. When water flow rises or drops more than 20% from that range (regardless of RPM), it will trip the alarm illuminating the built-in LED light; an optional audible alarm may be added. The LED light shines with intensity, making it visible in direct sunlight.

## Easy to Install

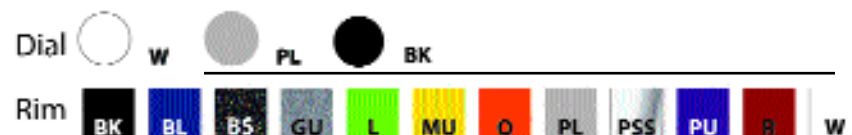
This kit is easy to install, Livorsi Marine offers three Tee sizes to fit your system. Mount the Tee in-line on the output side of a sea strainer or sea pump. The paddle wheel sensor installs in the Tee sending information to be processed on a circuit board that is mounted behind the dash panel. The wheel paddle can be easily removed for inspection and locks back into place once finished. This system trouble-free to install and with little maintenance to perform.

Raw Water Flow system consists of:

- 2 5/8" panel mounted gauge with internal warning light
- Bronze Tee
- PCB board
- Harness
- Paddle wheel transducer

cutout size	overall size
2 5/8"	2 3/4"

Water Flow Kits		
Tee Fitting Size	Base Part Number	
1 inch I.D. hose	WFG + dial color + rim color + rim style	1
1.25 inch I.D. hose		1.25
1.5 inch I.D. hose		1.50





# Vantage View®

Can Bus Gauges



For  
SmartCraft®,  
NMEA 2000®,  
SAE J1939 and  
GM MEFI engines

The Vantage View® system comprises of a Master Tachometer that reads information directly from the ECM/ECU. The Master Tachometer contains a LCD screen in which the user is able to view the performance data, Faults and Warnings of the boat or vehicle. All Vantage View® gauges utilize 270° digital stepper motors that accurately display data in real time. While these instruments are digital, they were designed with the traditional styling of analog gauges. Fluorescent fade resistant pointers and large bold graphics make these instruments easy to ready at a glance.

User programmable warning alarms, simplified rigging and rugged construction makes this line of instruments an exceptional tool for monitoring the performance of a vehicle, workboat or powerboat.

## Each engine requires its own Master Tach and daisy chains to slave gauges

- Each LCD displays up to 10 engine functions such as water temp, oil press, GPH, etc.
- Designed to work with SmartCraft®, NMEA 2000®, SAE J1939 and GM MEFI protocols
- For automotive, industrial or marine applications
- Control module may be mounted in location of your choosing to navigate through the LCD screen
- Available in sizes 2, 3, 4 and 5"



## NEW FOR 2015!

### Carbon Fiber and Silver Carbon Fiber dials

We've added the popular carbon fiber and silver carbon fiber dial option to our Vantage View gauge series.





### Four Function Gauge

The 4-in-1 gauge saves you dash space by combining 4 essential functions into one 5" gauge: oil pressure, water temperature, volts and fuel level.

### Speed

Vantage View® reads both CAN (NMEA 2000® and SAE J1939) and serial (NMEA 0183) based speed inputs.

### Programmable Alarms

In addition to factory set Fault and Warnings, users can tailor up to 15 alarms to their individual needs. When triggered, pop-up alerts appear on the LCD screen and the bright LED warning light illuminates on the corresponding slave gauge.

### Pop Up Alerts

Enabling of popup alerts for faults, warnings or alarms provides a highly visible alert screen when a fault, warning or alarm occurs. Popups may be enabled for engine trim/tabs brings up a trim detail screen when a change in trim position occurs. Vantage View® even displays Engine Diagnostic Codes for J1939.

### Faults and Warnings

Vantage View® alerts you of Faults and Warnings with blinking icons on the Master Tachometer LCD screen. Faults are a problem reported by the ECM/ECU that warrants stopping the engine. Warnings alert you of potential problems as reported by the ECM/ECU.

### Fuel Tank and Engine Trim Calibration

The Vantage View® system is the ability to calibrate the fuel tank and engine trim, ensuring utmost accuracy. The Master Tachometer can monitor up to two fuel tanks with the option to use an analog signal or CAN Bus information. The Engine Trim feature also allows for one analog or one CAN Bus signal.

# Vantage View®

Can Bus Gauges

## Rim Options

Low Profile Rim



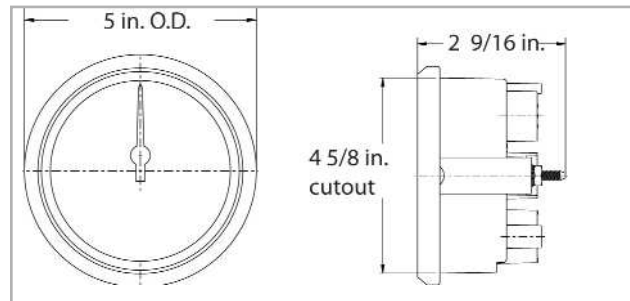
Mega Rim



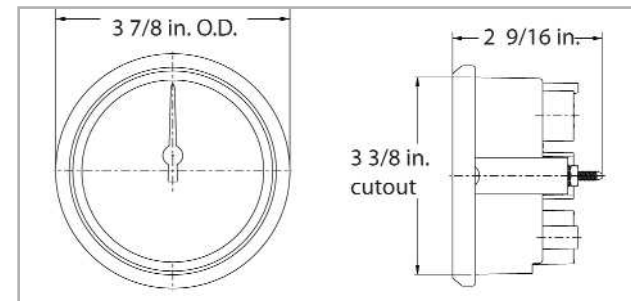
Race Rim



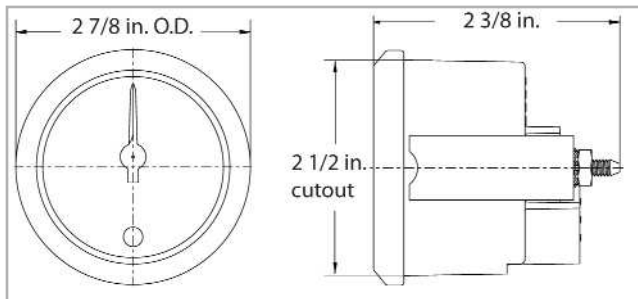
Master Tach, Slave Speedometer or Four in One



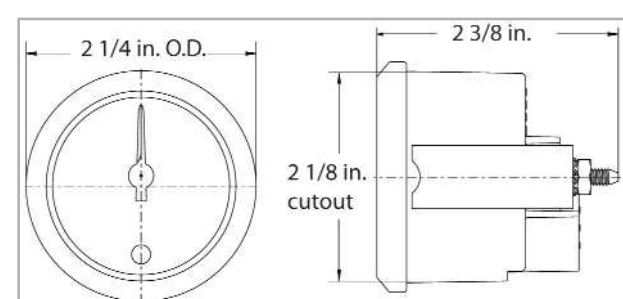
Master Tach or Slave Speedometer



2-1/2" Slave Gauges



2-1/8" Slave Gauges and FWA gauge



# Vantage View®

Can Bus Gauges

Each engine requires its own Master Tachometer

- LCD displays up to 10,000 RPM
- Up to 6 slave gauges may be daisy chained to the Master Tachometer
- Marine configured tachs display "Total Hours"
- Automotive/industrial configured tachs display "Total Miles"
- Have the ability to record and reset three trip logs
- The user can set up 10 parameters of their choice to display in the main screens. Choose between single or three parameter display.

Menu navigation requires the use of either a control pod (controls up to 4 engines) or the VV switch control module.



control pod



switch control module



VJS7KPLPLR



VJS4KBKPLR

Master Tachometer - SmartCraft® protocol		
Description	Part Number	
	3 3/8"	4 5/8"
4000 RPM	VSCS4K	VSCL4K
7000 RPM	VSCS7K	VSCL7K

Master Tachometer - NMEA 2000®, J1939 & MEF14 protocol		
Description	Part Number	
	3 3/8"	4 5/8"
4000 RPM	VJS4K	VJL4K
7000 RP	VJS7K	VJL7K

Analog Input- Resistance Ranges	
Description	Resistance Ranges- ohms
Fuel Level 1	240-33, 10-180, 0-90
Fuel Level 2	240-33, 10-180, 0-90
Fresh Water Level	240-33, 10-180, 0-90
Waste Water Level	240-33, 10-180, 0-90
Engine Oil Level	240-33, 10-180, 0-90
Transmission Oil Level	240-33, 10-180, 0-90
Hydraulic Oil Level	240-33, 10-180, 0-90
Coolant Level	240-33, 10-180, 0-90
Washer Fluid Level	240-33, 10-180, 0-90
Generic Level	240-33, 10-180
Boost Pressure	240-33, 10-180
Block Pressure	240-33, 10-180
Fuel Delivery Pressure	240-33, 10-180
Engine Oil Pressure	240-33, 10-180
Transmission Oil Pressure	240-33, 10-180
Hydraulic Oil Pressure	240-33, 10-180
Brake Application Pressure	240-33, 10-180
Brake Primary Pressure	240-33, 10-180
Brake Secondary Pressure	240-33, 10-180
Generic Pressure	240-33, 10-180
Outside Air Temperature	10K Thermistor (Airmar T-80)
Inside Air Temperature	10K Thermistor (Airmar T-80)
Water Temperature	10K Thermistor (Airmar T-80)
Trim	240-33, 10-180, 0-90, 167-10
Steering Angle	240-33, 10-180, 0-90
Rudder Angle	240-33, 10-180, 0-90
Front Air Pressure	240-33, 10-180, 0-90
Rear Air Pressure	240-33, 10-180, 0-90

Faults or Warnings		
Description		Faults or Warnings
Warning Over Heat	Over-heat	W
Warning Low Oil Pressure	Low Oil Press	W
Warning Low Voltage	Low Voltage	W
Warning High Voltage	High Voltage	W
Warning Over Speed	Over Speed	W
Warning Water in Fuel	Fuel	W
Warning Guardian Active	Guard Active	W
Warning Check Engine	Check Engine	W
Oil Fault	Oil	F
Guardian/Check Engine Fault	Guard/Ck Eng	F
CAN Fault	CAN Bus	F
Water in Fuel Fault	Fuel	F
Voltage Fault	Voltage	F
Coolant Temperature Fault	Coolant Temp	F

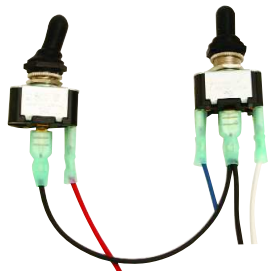
### Single Engine Switch Control Module

- Controls one Master Tachometer
- One assembly needed per engine
- Requires two 1/2 in. cutout for toggle switches

VVSAW assembly includes:

- Two switches & two boots
- DCC contacts for easy installation

Description	Part Number
switch control module	VVSAW
plate only (2 3/4 in diam.)	PSSP + color
mode switch only	TSMF
up/down switch only	TSMFM
black switch boot	TSRBBK



switch control module



switch control module with optional plate

### Control Pod

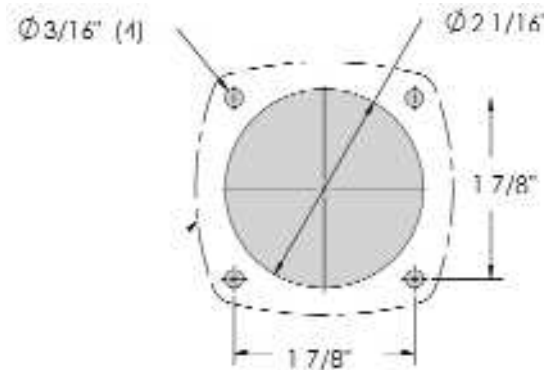
- Control up to 4 Master Tachometers with one pod
- Uses waterproof momentary buttons
- Twin, triple and quad control pods have a polished selector knob to toggle between Master Tachometers

Description	Part Number
single engine	VVCPSA + color
twin engine	VVCPTA + color
triple engine	VVCPTRA + color
quad engine	VVCPQA + color



Control Pod twin engine

### Control Pod Dimensions



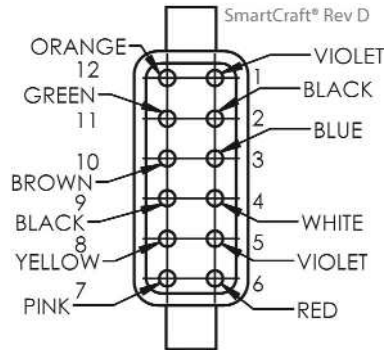
Colors:



# Vantage View®

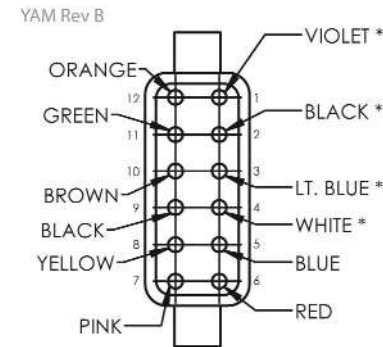
## Harnessing

SmartCraft® Master Harness  
length: 36 in. ± .5 in.



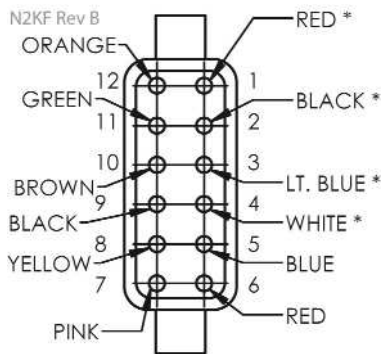
Part Number		VVMHSC
Wire Label		
Number	Color	Label
7	Pink	Analog
8	Yellow	NMEA 0183

SAE J1939/Indmar Master Harness  
length: 36 in. ± .5 in.



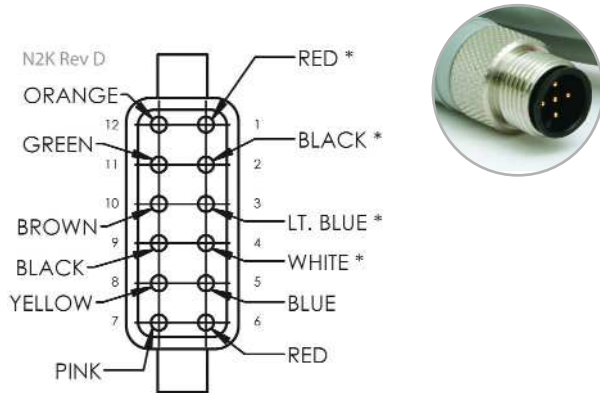
Part Number		VVMHJI
Wire Label		
Number	Color	Label
1	Violet	Switched Positive
2	Black	Ground
3	Lt. Blue	CAN L
4	White	CAN H
5	Blue	Lighting
6	Red	Battery
7	Pink	Analog
8	Yellow	NMEA 0183
9-12	-	to amp connector

NMEA 2000® Micro C Female Master Harness  
length: 36 in. ± .5 in.

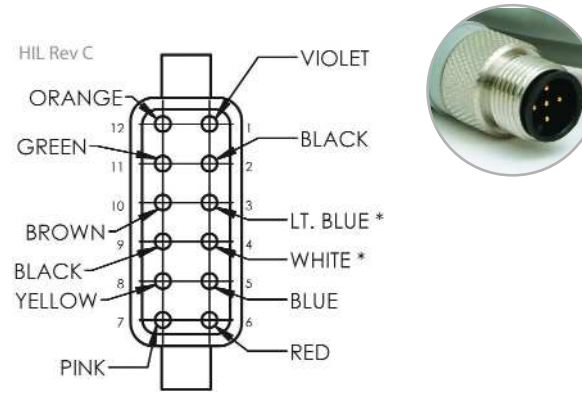


Part Number		VVMHN2KF
Wire Label		
Number	Color	Label
5	Blue	Lighting
6	Red	Battery
7	Pink	Analog
8	Yellow	NMEA 0183

NMEA 2000® Micro C Male Master Harness  
length: 36 in. ± .5 in.



Ilmor Micro C Male Master Harness  
length: 36 in. ± .5 in.



Part Number		VVMHN2K
Wire Label		
Number	Color	Label
5	Blue	Lighting
6	Red	Battery
7	Pink	Analog
8	Yellow	NMEA 0183

Part Number		VVMHIL
Wire Label		
Number	Color	Label
1	Violet	Switched Positive
2	Black	Ground
5	Blue	Lighting
6	Red	Battery
7	Pink	Analog
8	Yellow	NMEA 0183



Long Slave Harness		
Description	Length	Part Number
2 gauge	27 1/2 in.	VVSH2L
4 gauge	53 1/2 in.	VVSH4L
6 gauge	78 1/2 in.	VVSH6L

Short Slave Harness		
Description	Length	Part Number
2 gauge	17 in.	VVSH2S
4 gauge	37 1/2 in.	VVSH4S
6 gauge	54 1/2 in.	VVSH6S



# Vantage View®

## Slave Speedometers



60 MPH



80 MPH



100 MPH



120 MPH

The speedo receives data from the Master Tach which can be from the following:

- CAN message
- Paddle wheel
- GPS signal- uses the A/D digital input available on the Master Tach.  
The GPS source must be wired to the proper pin of the 12 pin connector of the Master Tach.

Both the paddle wheel and GPS antenna must be NMEA 0183 compliant.

Note: Vantage View requires the use of GPS antenna part number: GPSRAQ3VV.  
Other GPS antenna models may not work with Vantage View.



160MPH



Description	Part Number		
	3 3/8"	4 5/8"	
60 MPH	VJS60	VJL60	For a kit add "K" after the MPH
80 MPH	VJS80	VJL80	
100 MPH	VJS100	VJL100	
120 MPH	VJS120	VJL120	
160 MPH	VJS160		
GPS antenna	GPSRAQ3VV		



### FWA Gauge

This gauge provides five discrete illuminated visual indicators and multiple outputs. Outputs include a dedicated audible alarm and one set of relay output contacts for secondary alarms or additional engine protection devices.





This FWA gauge is needed in order for Vantage View® to receive built in Faults and Warnings from Cummins Diesel engines when a Diesel View display is not present.

FWA gauge will work on all engine protocols except for Mercury Gas SmartCraft® engines.

Available with a black dial only. 2 1/8" cutout

Description	Part Number
fwa gauge	VJSFWABK + rim color + style



Color Codes	
Dial	 BK
Rim	 BKR  PLR  PSR

### Four Function Gauge

Save dash space with this four function gauge:

- Oil pressure
- Water temperature
- Volts
- Fuel level

Description	Part Number
3 3/8" cutout	VJS4K + dial color+ rim color + rim style
4 5/8" cutout	VVJN14F + dial color+ rim color + rim style



Dial	W	PL	BK	CF	SF							
												
Rim	 BK	 BL	 BS	 GU	 L	 MU	 O	 PL	 PSS	 PU	 R	 W

# Vantage View®

## Slave Gauges

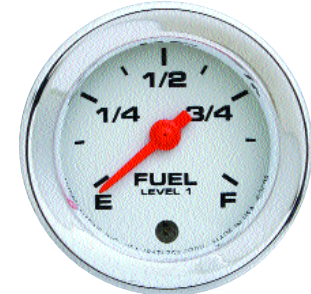
NMEA 2000® , SmartCraft® , GM MEFI and J1939		
Description	Part Number	
	Small 2 1/8"	Large 2 1/2"
boost 0-35 PSI	VJSB	VJLB
fuel level 1	VVJNISFL1	VVJNILFL1
fuel level 2*	VVJNISFL2	VVJNILFL2
fuel pressure 90 PSI	VJSFP90	VJLFP90
oil level 1	VVJNISOL1	VVJNIOLO1
oil level 2*	VVJNISOL2	VVJNIOLO2
oil pressure 0-80 PSI	VVJNISOP	VVJNIOLOP
oil temperature 0-280°F	VVJNISOT	VVJNIOLOT
trim drive port (left)	VVJNISTDP	VVJNILTDP
trim drive stbd (right)	VVJNISTDS	VVJNILTDS
voltmeter 10-16V	VVJNISVM	VVJNILVM
water pressure 30 PSI	VVJNISWP30	VVJNILWP30
water pressure 60 PSI	VVJNISWP60	VVJNILWP60
water temperature 100-240°F	VVJNISWT	VVJNILWT

Note: \* Available for Smartcraft only

NMEA 2000® - Ilmor compliant		
Description	Part Number	
	Small 2 1/8"	Large 2 1/2"
voltmeter- alternator 10-16V	VVNISVMA	VVNILVMA
water pressure 30 PSI	VNSWP30C	VNLWP30C
water pressure 60 PSI	-	VNLWP60C



boost 0-35 PSI



fuel level 1



oil pressure 0-80 PSI



oil temperature 100-280° F



water pressure 0-60 PSI



water temperature 100-240° F



fuel level 2



fuel pressure 0-90 PSI



oil level 1



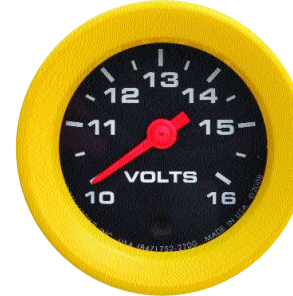
oil level 2



trim drive port (left)



trim drive starboard (right)



voltmeter 10-16



water pressure 0-30 PSI

### Vantage View Slave Gauges

- Slave gauges must be connected to the Master Tachometer via the slave harness daisy chain
- 270 degree sweep with digital stepper motors
- LED warning lights illuminate when programmed alarms are triggered (setup through the Master Tachometer)
- Fluorescent orange pointers
- Back lit with red LED lighting

