

# LED Navigation Lights

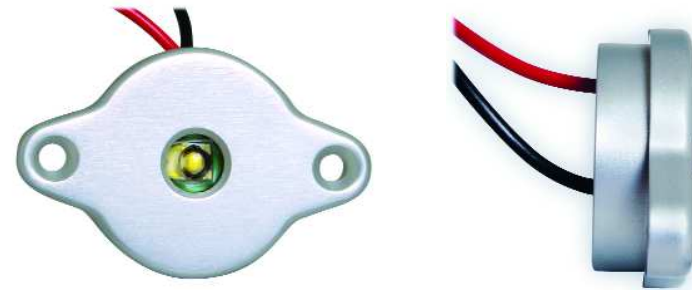
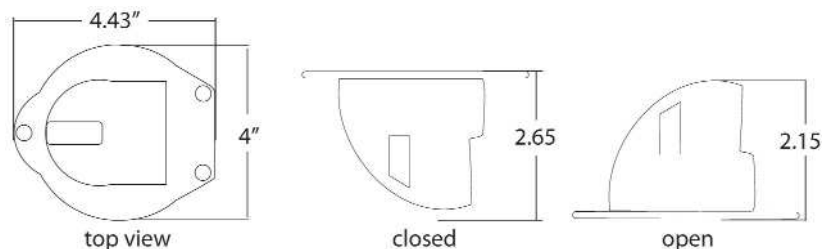


shown closed  
with optional cup

## Pop Up LED Bow Light

- Port and starboard light in one housing
- Marine grade 316 stainless steel
- Folds down flush when closed
- USCG approved for 2 nautical miles
- LED lights stay cool to the touch
- Optional cup for water run-off
- Light with cup measures 3 1/4" deep
- Light has 3 1/2" diameter cutout

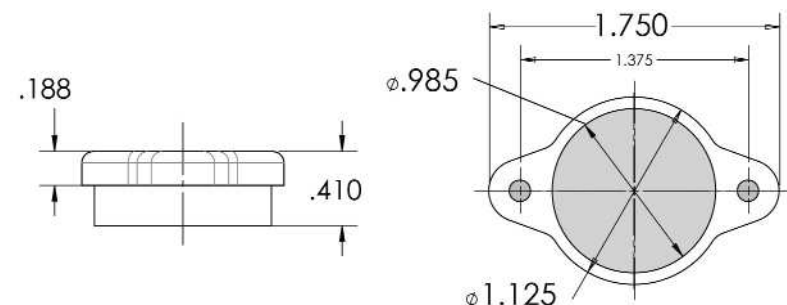
Description	Part Number
bow light	LEDPUBL
water run off cup	LEDPUBLWC



## Flange Mount LED Lighting

- Not certified for use as navigation lights
- Housing is machined from billet aluminum
- Environmentally sealed
- Bright LED can illuminate engine compartments

Description	Part Number
red	LEDR
green	LEDG
white	LEDW

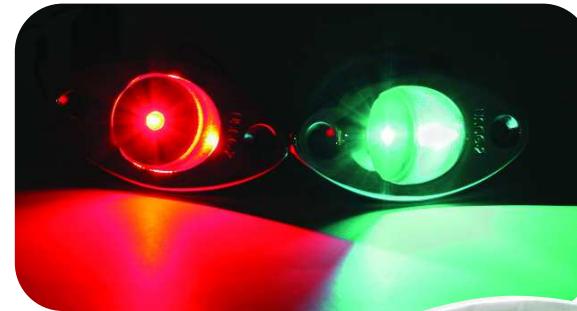


# LED Navigation Lights

These Livorsi LED nav lights only consume 1/10th of an amp at 14 volts. This means a longer life and less rigging time replacing lights. These lights are to be used on any vessel up to 65 feet and have a visibility of 2 nautical miles.

Designed to be mounted on a vertical surface, to allow the light pattern to be unobstructed from view.

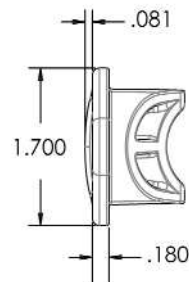
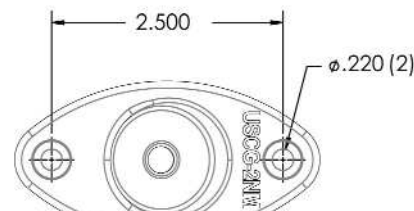
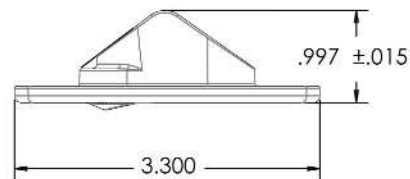
- Visible for 2 nautical miles
- For use on boats up to 65 feet
- Marine grade 316 stainless steel
- Available for 12 or 24 volt systems
- Completely waterproof, environmentally sealed
- NMMA accepted
- USCG approved for 2 nautical miles
- Meets ABYC standards



Description	Part Number
port - red	LEDNL2R
starboard - green	LEDNL2G
adapter plate	LEDNLAP



LEDNLAP  
8" L x 2 1/4" W x 1/8" thick



ABYC Section A-16: The starboard sidelight showing green, and the port sidelight showing red, from dead ahead to 22.5° abaf t the beam (90° + 22.5° + 112.5°) on their respective sides.

Mounting angle for navigation lights is 24° relative to centerline of boat.

