

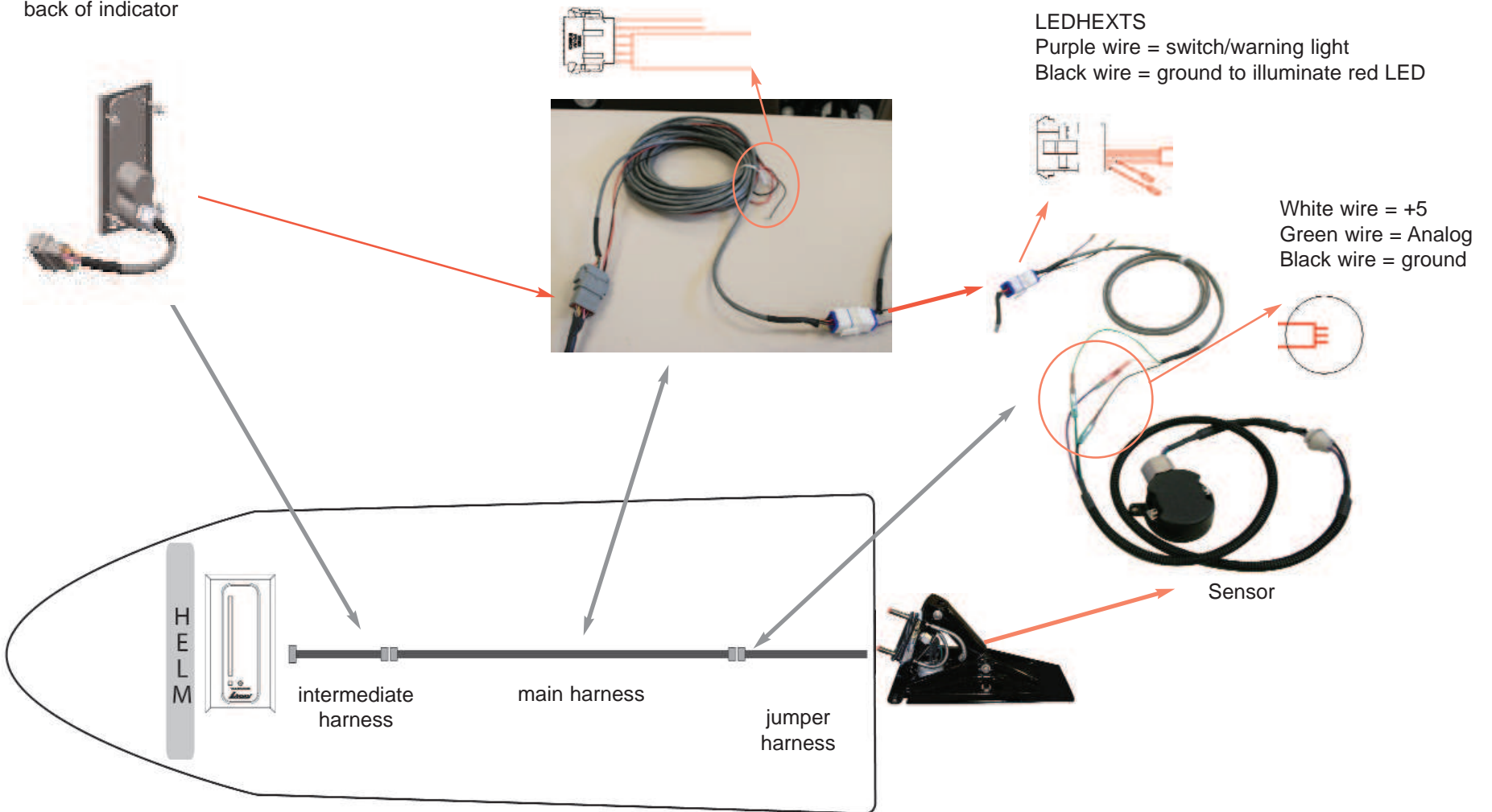
back of indicator

LEDHSA + length
Red wire = (Switch) 12V
Black wire = vessel ground

LEDHEXTS

Purple wire = switch/warning light
Black wire = ground to illuminate red LED

White wire = +5
Green wire = Analog
Black wire = ground

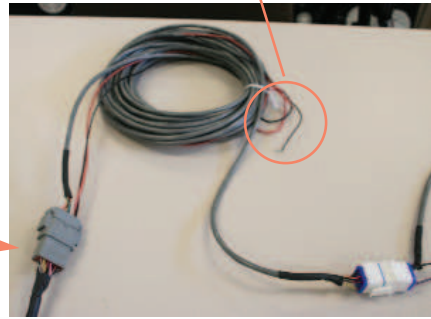


Adjustable LED Indicator Connection to Trim Tabs Harness: LEDHINT to LEDHEXT10 or LEDHEXT15

back of indicator



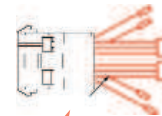
LEDHSA + length
 Red wire = (Switch) 12V
 Black wire = Vessel ground



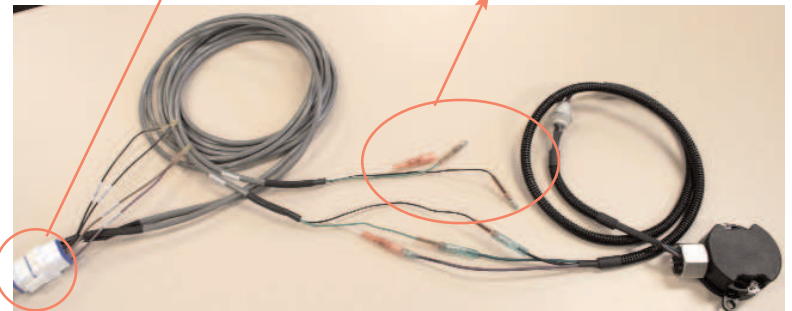
main harness

LEDHEXT10 or LEDHEXT15

Brown wire = STBD switch
 Black wire = ground to illuminate red LED
 Black wire = ground to illuminate red LED
 Violet wire = Port switch



White wire = +5
 Green wire = Analog
 Black wire = ground



jumper harness

Sensor

