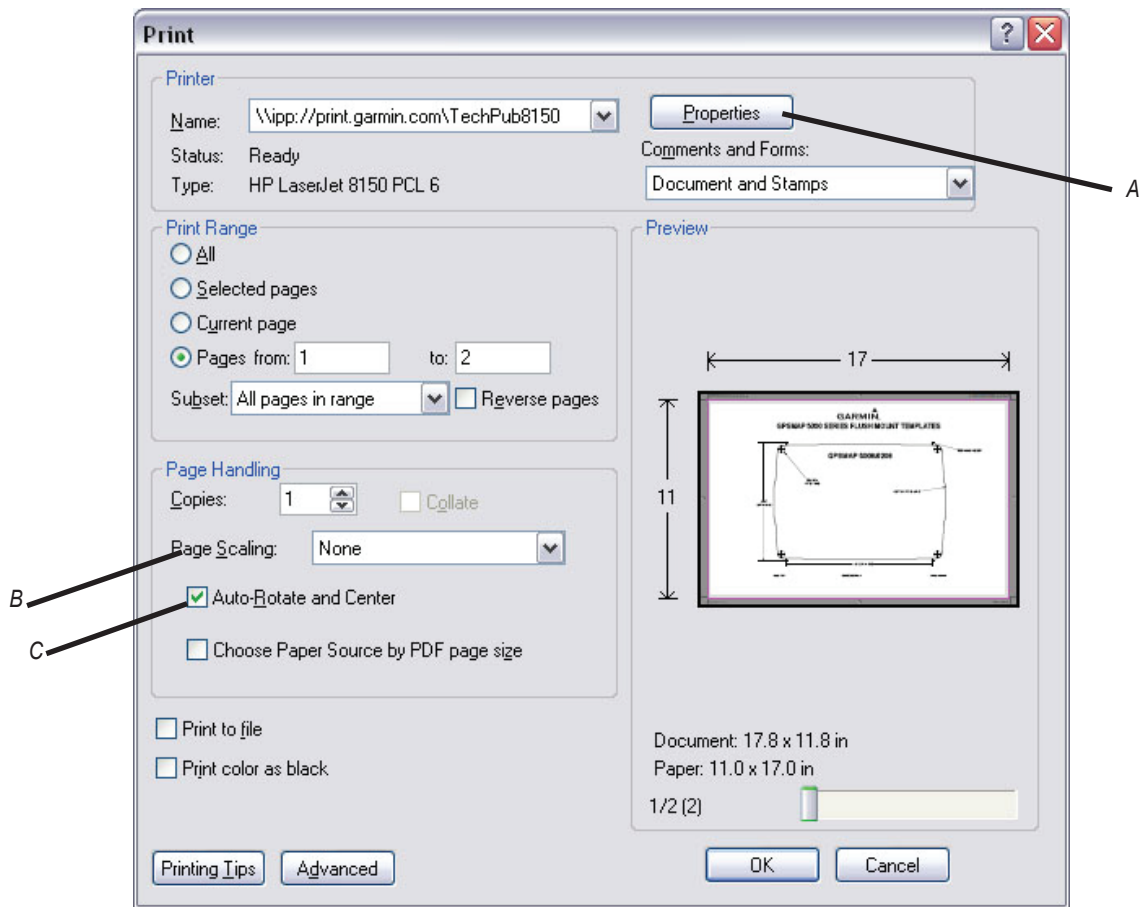


# PRINTING A GPSMAP® 4000/5000 SERIES FLUSH MOUNT TEMPLATE IN ADOBE ADOBE ADOBE



Adobe Acrobat Print Dialog Box

## Notes:

- (A) You must print the template on 11"x17" paper. This is normally selected in the 'Printer Properties', and will differ by manufacturer.
- If your printer is not capable of printing on 11"x17" paper, or you do not have 11"x17" paper, you must print this template at an office services store or similar location that has the ability to print on 11"x17" paper.
- (B) You must set the 'Page Scaling' setting to 'None'.
- (C) Select 'Auto-Rotate and Center' to make sure the template prints in the correct orientation.

## Important Information:

- Before cutting the mounting surface, measure the printout to make sure it printed at the correct size. Both the length and width measurements are noted on the template. **Verify both the length and width measurements before cutting.**
- When cutting the Flush Mount template, cut **inside the line**, then sand and/or file the mounting surface to ensure a good fit.



# GPSMAP® 5008/5208 FLUSH MOUNT TEMPLATE

