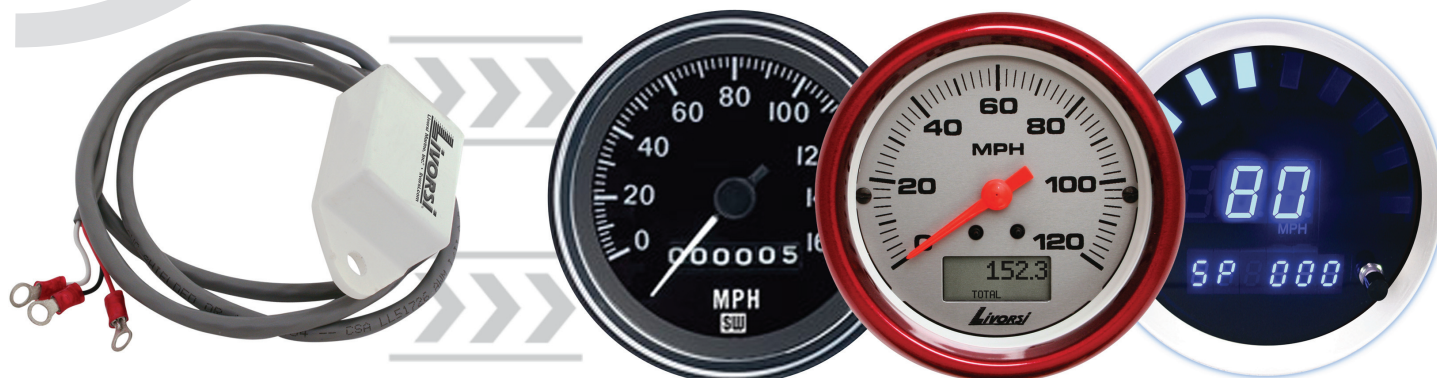


GPS Pulse Antenna

Converts any 8K or 16K Pulse Electronic Speedometer Into a GPS Speedometer



Convert your electronic automotive speedometer into a GPS speedometer with this GPS Pulse Antenna. The antenna receives GPS satellite signals and outputs the information to 8,000 or 16,000 pulse signal to your existing speedometer.

This fast update antenna receives signals 10Hz (10 per second) driving your electronic speedometer to display your true speed (no pointer lag). This universal antenna is a stand alone device, it can be used on any make or model vehicle as it does not require any connections to the transmission or calibration to tire size. This antenna can be mounted under the dash or in an other hidden area as long as you verify the speedometer is working properly before permanently mounting the antenna.

Accuracy and ease of installation makes this GPS Pulse Antenna an affordable solution if you are looking to upgrade to a GPS speedometer system.

- › Universal- use on any vehicle make or model
- › Outputs 8,000 or 16,000 pulse /mile
- › Eliminates cables to transmission
- › Does not require membership fee for GPS service
- › 10Hz update for real time data (10 per second)
- › 2 3/4 in. L x 2 3/8 in. W x 7/8 in. H
- › Operating voltage is 10-32V DC
- › Unit typically consumes < 50Ma at 12V
- › Pulse output is a square wave

Description	Part Number
Antenna For Non-GPS speedo heads Fast 10 Hz -8/16 pulse output 4 ft harness and ring terminals to connect to threaded #8-32 studs	GPSESQ3