

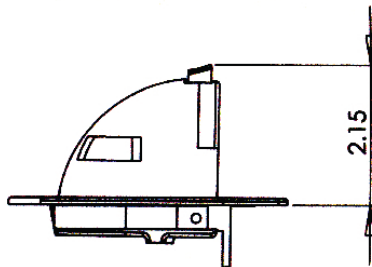
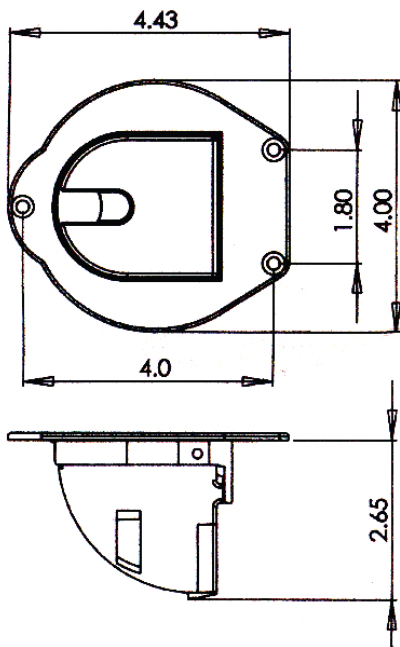
LED Pop-Up Bow Light

Part # LEDPUBL

- USCG approved 2 nautical miles
- LED light stays cool to the touch
- *Optional* plastic cup for water run-off is available, Livorsi part# LEDPUBLWC

Installation Instructions

- Drill a 3 1/2" diameter hole using a hole saw
- Fasten with three #10 screws (screws not included)



Shown with light closed
and with optional waterproof cup

The waterproof cup measure 3 1/4" Deep