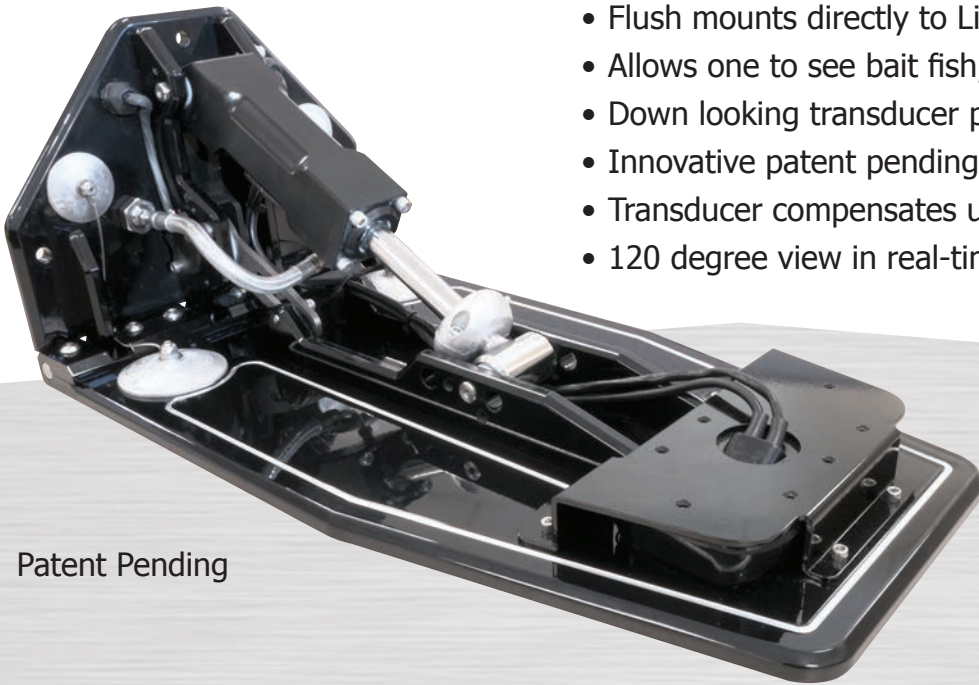


Trim Tab Mount for the Garmin Panoptix[™] PS30 Down Transducer

- By eliminating difficult hull mountings readings may now be acquired while traveling during speeds up to 30 MPH
- Flush mounts directly to Livorsi 1050 billet trim tabs
- Allows one to see bait fish, target fish and lures in real-time
- Down looking transducer provides live feed display in 3-D
- Innovative patent pending design
- Transducer compensates up to 20 degrees of dead rise
- 120 degree view in real-time

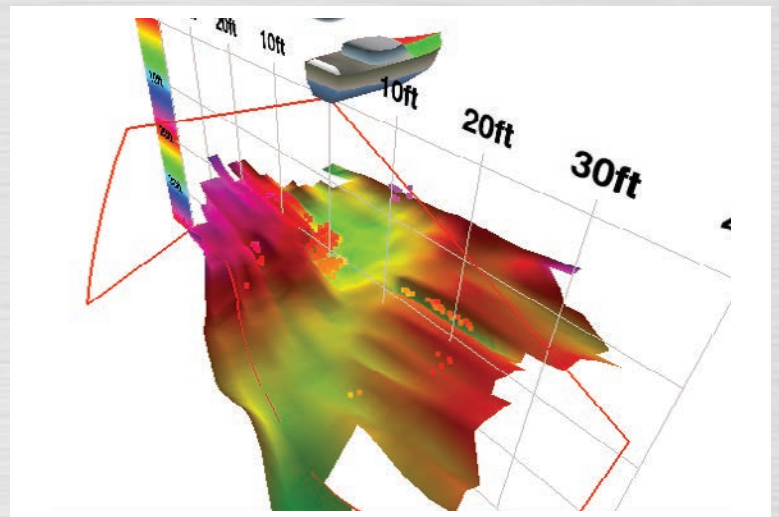


Patent Pending

PANOPTIX[™] 
ALL-SEEING SONAR

Unlike traditional sonars that show history of what is beneath your boat, Panoptix[™] Down allows you see all structures and fish around your boat in **real time** even while stationary.

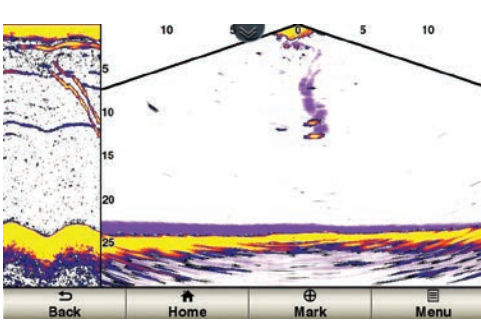
120 degree view - Has the ability to view port, starboard, below the boat, reefs structures, depth of targets and their height.



Panoptix[™] PS30 Transducer is compatible with Garmin GPSMAP[®] 7400/7600 series, GPSMAP 8000/8500 and GPSMAP 721/741/820/840/1020/1040 series chartplotters.

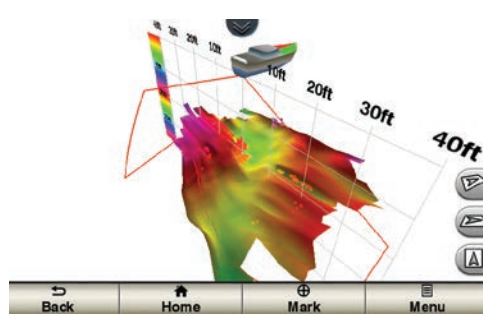
Three viewing modes

LIVEVÜ DOWN



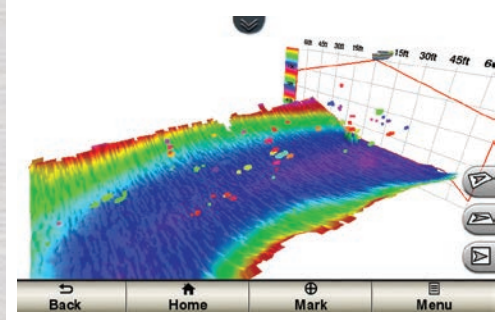
Provides real-time moving sonar images. You can see fish swimming toward or away from the boat. You can see small bait fish and large target fish swimming around, even your lure.

REALVÜ 3D DOWN

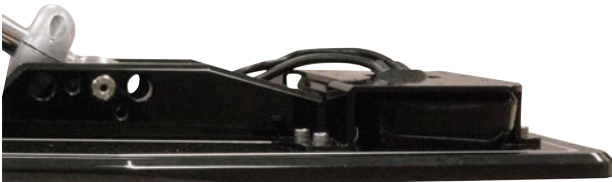


Allows your boat to be stationary and still see things in 3-D around your boat. It shows history of only 1 sweep. Scans the area below the boat from front to back and side to side. This image shows the backside of the vertical face on Port side of the boat 35 ft deep.

REALVÜ 3D HISTORICAL



Used for finding fish while your boat is moving. This shows the entire water column you have passed over in 3-D, from the bottom of the surface and all of the fish in between. This image shows the boat passing over a stream channel with a school of fish between 30-40 ft.



Panoptix™ PS30 Transducer Specs:

Weight:

- Transducer and cable: 3.1 lbs (1.4 kg)

Temperature Range:

- Operating: 32°F to 104°F (0°C to 40°C)
- Non-operating: -40°F to 158°F (-40°C to 70°C)

Power consumption: <0.8 A @ 12 Vdc

Voltage range: 10-35 Vdc

Frequencies supported: 417 kHz

Maximum range: 300 ft

Flush mount

