

FULL SWEEP "5V" GAUGE



POSITION APPLICATIONS

- Rudder indication, trim indication, trim tab indication, jack plate indication, jet pump bucket indication, throttle position, throttle percent, valve open/closed position, valve open/closed percent, etc.
- 5VDC reference voltage supplied by gauge. No additional wiring needed.
- High and low adjustment pots for precise indication and fine tuning.
- Gauge cutout 2-5/8 inch with water resistant Deutsch connectors.
- Custom harnesses available upon request.

PRESSURE/VACUUM APPLICATIONS

- PSI, PSIA, PSIG, PSID, VACUUM
- Works with all 1-5 VDC senders.
- 5VDC reference voltage supplied by gauge. No additional wiring needed.
- 270 degree sweep for precise indication. High and low adjustment pots for precise indication and fine tuning.
- Custom harnesses available on request.

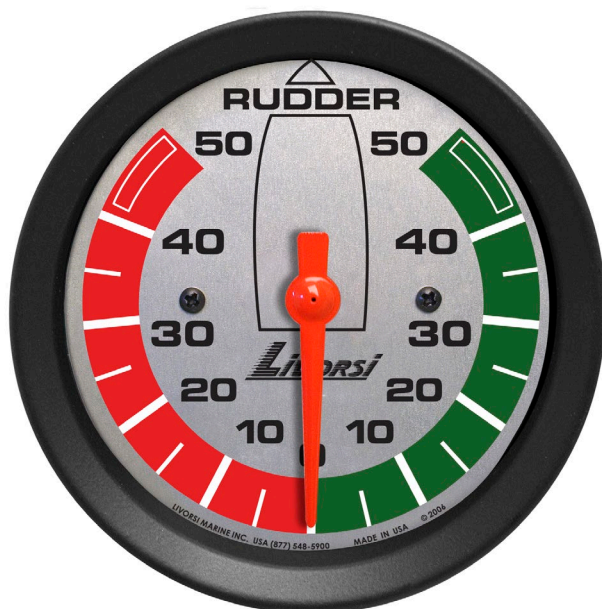
*Compatible with most jack plate manufacturers including Bobs Machine Shop and Hydro Dynamics.



PART # PICTURED: **DC5VPTTLPSSRR**
(PORT TAB, PLATINUM DIAL, & POLISHED SS RACE RIM)



PART # PICTURED: **DC5VSTTLPSSRR**
(STBD TAB, PLATINUM DIAL, & POLISHED SS RACE RIM)



PART # PICTURED: **DC5VRDCPLBKRR**
(RUDDER, PLATINUM DIAL, & BLACK RACE RIM)



PART # PICTURED: **DC5VJBPLBKRR**
(JET BUCKET, PLATINUM DIAL, & BLACK RACE RIM)