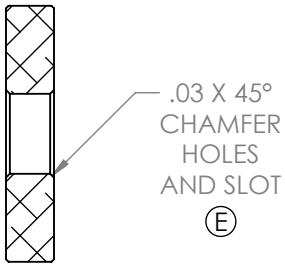
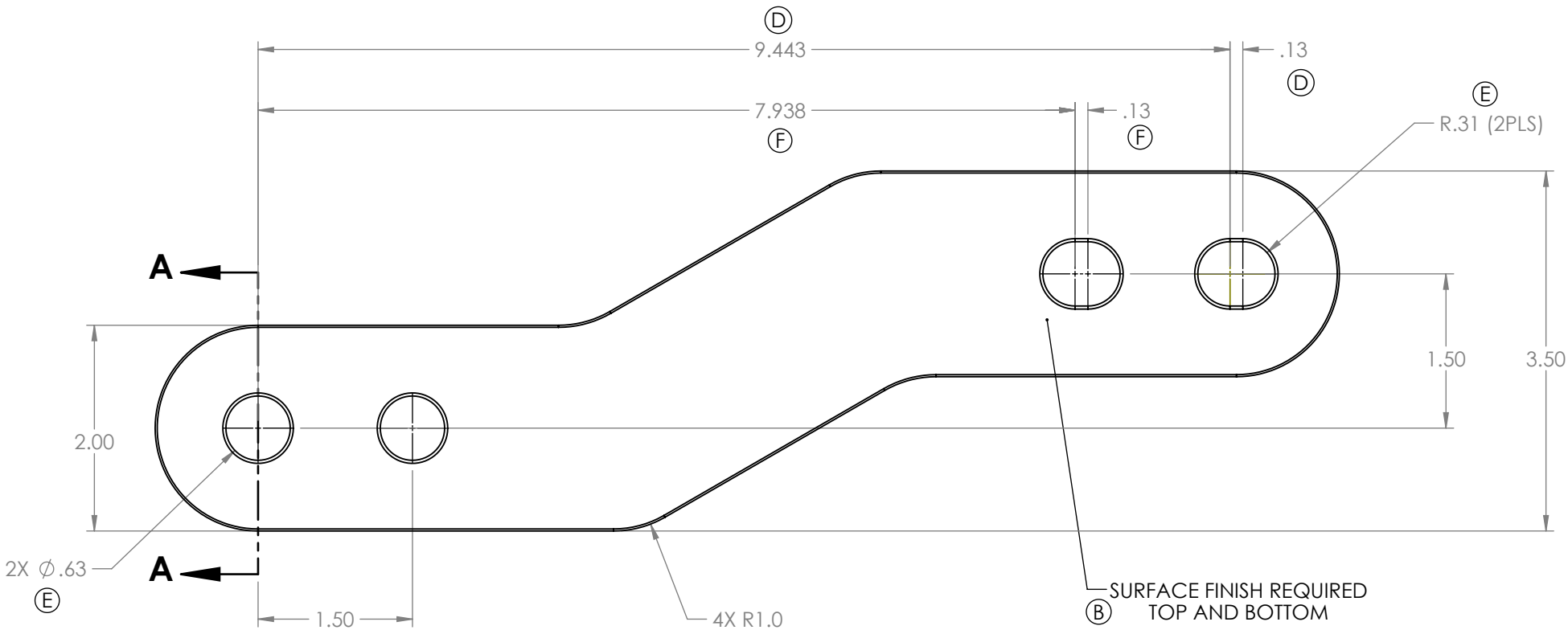
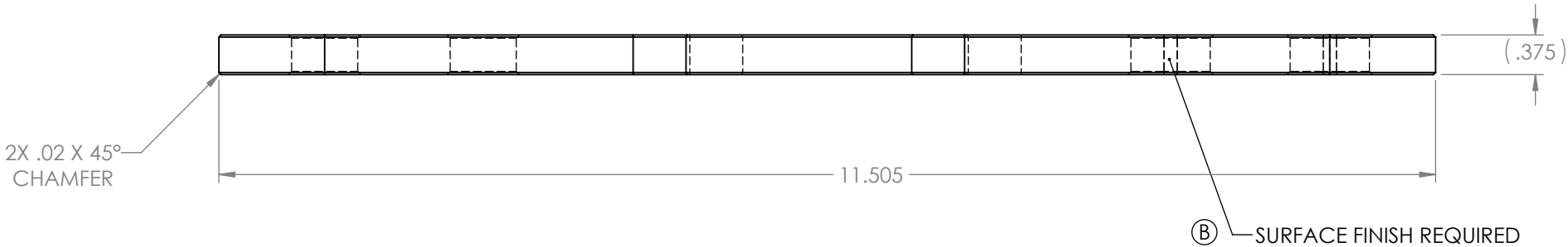
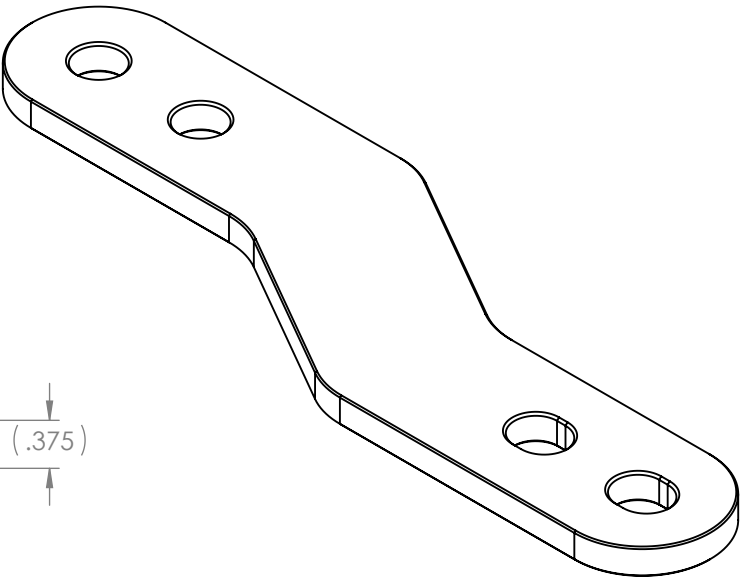


CHART "A"		
PART NUMBER	MATERIAL	FINISH
MP-4SS	316 STAINLESS STEEL 3/8" THK STOCK	POLISH Ra<3
MP-4AL	6061 MARINE GRADE ALUMINUM 3/8" THK STOCK	MACHINE Ra<10, SANDBLAST



SECTION A-A

The disclosures and contents of this drawing are confidential and the exclusive property of CompX Fort. This print is not to be copied or reproduced and is furnished for engineering information only. Possession of this print does not give license to manufacture articles shown hereon without written permission. The version fields (VER) must be set to 0 (zero). If not , this drawing is considered uncontrolled and CompX Fort cannot be held responsible for its accuracy. Manufacture of components, models, shown hereon, is at vendor's risk.

F	29324	ADDED SECOND SLOT	2/6/2020	AM	JW	JL
E	29263	ADDED CHAMFERS TO HOLES AND SLOT. CHANGED HOLES AND SLOT TOLERANCE.	12/4/2019	AM	JW	JL
D	29130	TURN SINGLE HOLE INTO SLOT	7/12/19	AM	JW	BL
C	29117	PART NUMBER WAS MOTORPLATE-4XX	7/2/19	AM	JW	BL
B	29077	ADDED SURFACE FINISH CALLOUTS	5/23/19	AM	JW	BL
A	29071	RELEASE FOR PRODUCTION	5/14/19	AM	JW	BL
REV	ECO	DESCRIPTION	DATE	DFTM	CHKD	APVD

PG: 1 OF 1		IS THIS PART SUBJECT TO ANY REGULATORY REQUIREMENTS?		NO
SCALE: 1:1		PROJ. NO:		
STANDARD TOLERANCES UNLESS OTHERWISE SPECIFIED PER ASME Y14.5-2009		VER: MDL: DRW:		
FRACTION: .XXX = ±.003 DECIMAL: XX = ±.010 X = ±.015		PART NAME: MOTOR PLATE-4		
ANGLES: ∠ ±1°		MATERIAL: SEE CHART "A"		
DRAWN BY: AM DATE: 5/14/2019		RELEASE: IN WORK		DRWG SIZE B
CUST PN: -		PART NO: MP-4XX		