

# OUTBOARD BACKING PLATES

## FEATURES:

- Available in 2 hole & 4 hole Anodized Aluminum or 316 Stainless Steel for complete saltwater protection
- Evenly distributes stress throughout transom area
- With or without Logo (Private Labeling Available)
- One-time art charge
- Available in many colors

## PART NUMBERS

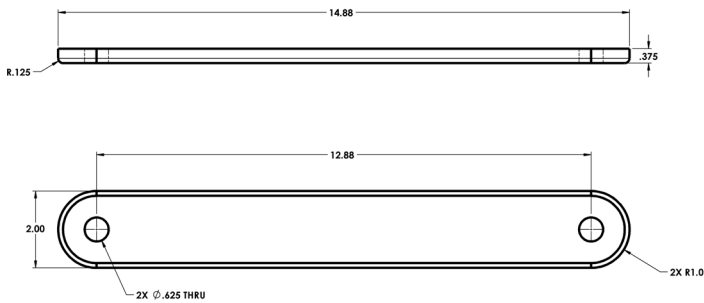


<b>MP1</b>	<b>Small Plate - 2 Hole</b>
Base PN	
MP-1ALCAN	Clear Anodized AL
MP-1AL-L01W	Lasered Logo
MP-1SS	316 Stainless
MP-1SS-B01	316 Stainless + Logo
<b>MP2</b>	<b>Large Plate - 4 Hole</b>
MP-2ALCAN	Clear Anodized AL
MP-2AL-L01W	Lasered Logo
MP-2SS	316 Stainless
MP-2SS-B01	316 Stainless + Logo
<b>MP3</b>	<b>Large Plate - 4 Hole - 3.13" Width</b>
MP-3ALCAN	Clear Anodized AL
MP-3AL-L01W	Lasered Logo
MP-3SS	316 Stainless
MP-3SS-B01	316 Stainless + Logo
<b>MP5</b>	<b>S-Plate 4 - Hole</b>
MP-5ALCAN	Clear Anodized AL
<b>MP5</b>	<b>Lower Deck Plate 2 - Hole</b>
MP-5SS	Anodized AL

# OB BACKING PLATES

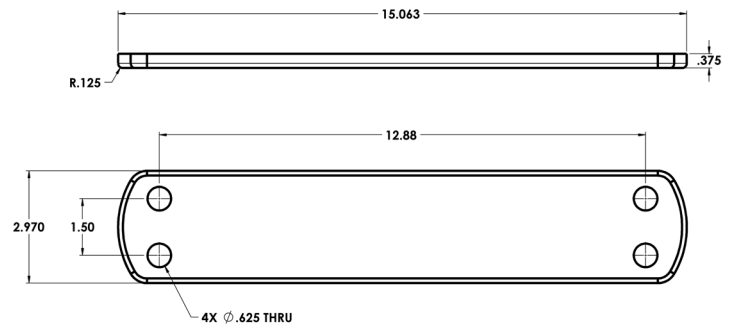
## MP1SS

316 Stainless Steel



Anodized Aluminum

## MP2AL



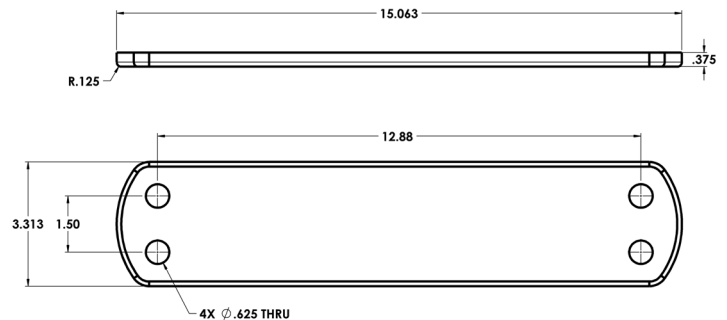
# OVERSIZED

- Oversized backing plate for Mercury 450 R engines & other large HP engines



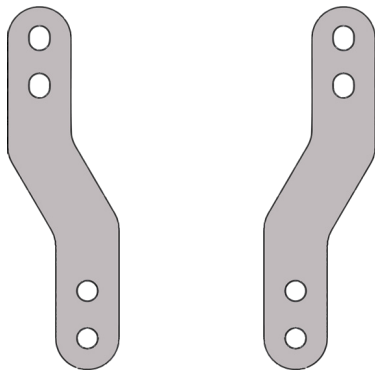
Increased Width

## MP3SS

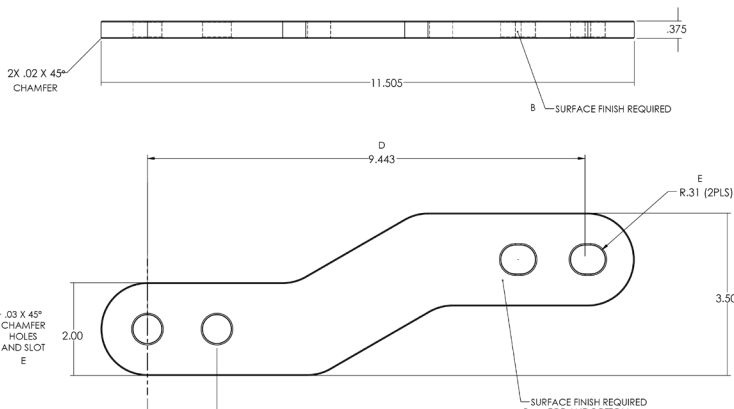


# S-PLATES

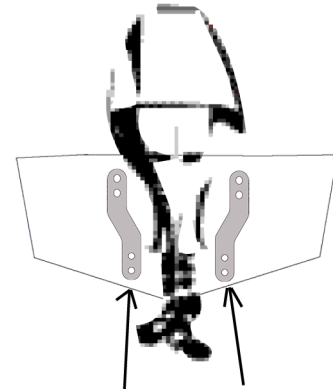
- Backing plates for OB when mounting below deck & stringers are in the way



**MP4SS**

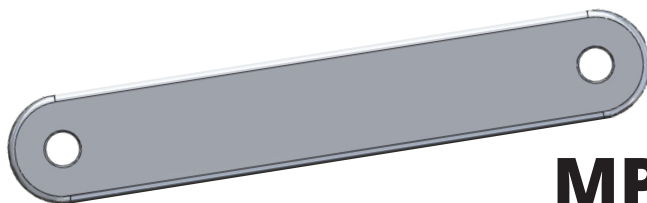


OB Below Deck S-Plate

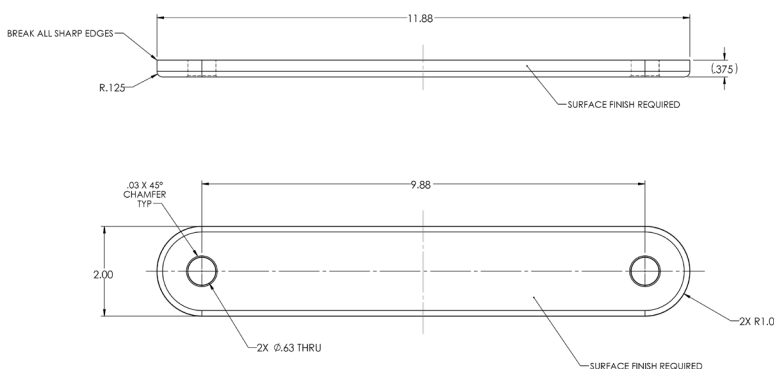


**\*Unlike Washers, these plates distribute load evenly across the transom**

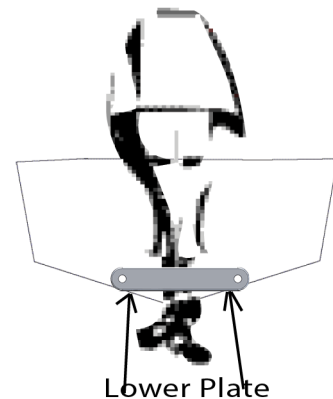
# LOWER MOUNTING PLATES



**MP5SS**



OB Below Deck Plate



**\*Unlike Washers, these plates distribute load evenly across the transom**



**NEW!**

# HIGH FLOW FUEL / WATER SEPARATORS

## *Single Tank*

(2 PORT)



## *Dual Tank*

(4 PORT)



*Mounted Down  
For Tight Spaces*

## *Triple Tank*

(6 PORT)



- Compatible with Mercury's new 450R & other high horsepower engines
- Multiple Port locations allow units to be mounted almost anywhere
- Configurable mounting bracket allows installers to mount fuel/water separators in tight locations
- Anodized and painted for superior corrosion resistance
- 1/2" or 3/8" NPT fittings available