

Mega & Race Series

Analog Gauges

Features

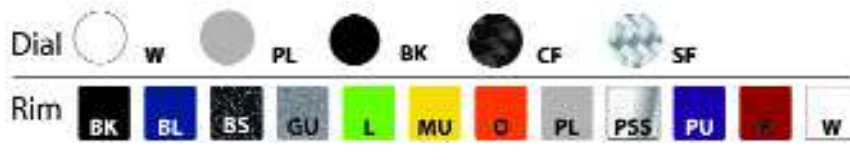
- Standard size or oversize
- Plug-in connectors are waterproof and resist salt corrosion
- Gauges are encased in non-ferrous hardware
- Red LED lighting is standard; for easy viewing in low light conditions
- Available in 12 or 24 volt system
- Your choice of rim style: Mega or Race



Mega Rim

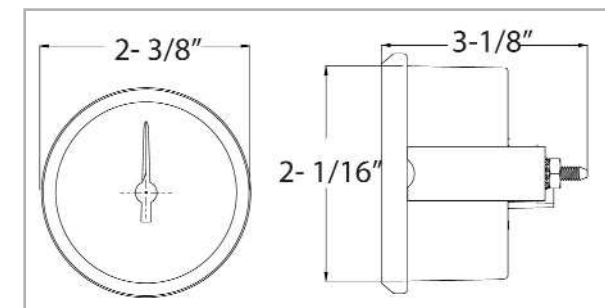
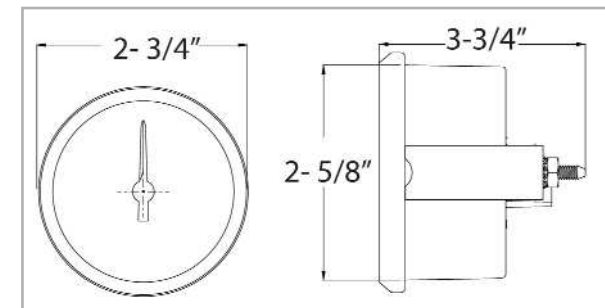
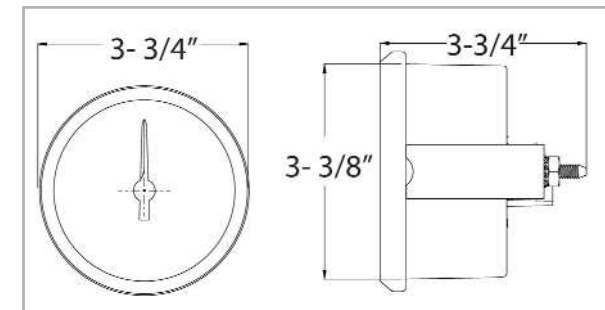
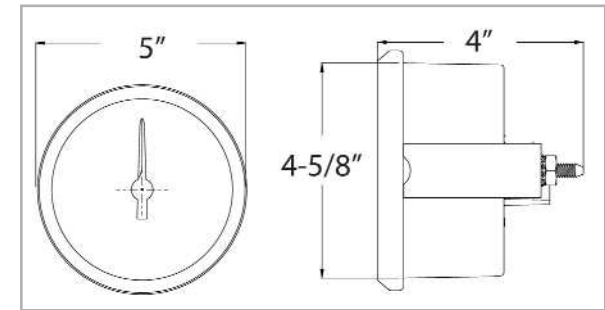


Race Rim



Custom Options

- Dial color
- Needle color
- Private label
- Your custom graphics or custom paint



Mega & Race Series

Tachometers

Gas Tachometers are compatible with:
4, 6, & 8 cylinder, V-10, Merc O/B, 6 pulse/12 pole

Gas Tachometers

Description	Part Number			Requires
	2 5/8"	3 3/8"	4 5/8"	
6,000 RPM	-	DCS6000	DCL6000	DCH harness
8,000 RPM	MT8000	DCS8000	DCL8000	DCH harness
10,000 RPM	-	DCS10000	DCL10000	DCH harness
12,000 RPM	-	DCS12000	-	DCH harness

Diesel Tachometers

Description	Part Number	Requires
	3 3/8"	
4,000 RPM alt driven	DC4000 DA	DCH harness
4,000 RPM mag probe driven	DC4000 MPD	DCH harness
4,000 RPM mech signal generator driven	DC4000 MSGD	DCH harness

4 Pin Connector & Wire Harness

- 24 inches in length
- Pre-assembled and labeled

Tachometer Hardware

Description	Part Number
DCH harness 12V 24" lead	DCH
DCH harness 24V 24" lead	DCH24
DCH harness 12V w/ tach filter, reduces needle bounce	DCTFH



6000 RPM



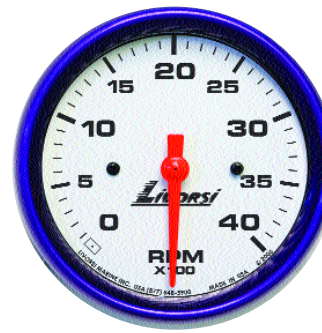
8000 RPM



10000 RPM



12000 RPM



4000 RPM



DCH

Mega & Race Series

GPS Speedometers

Purchase GPS Speedometer only, you get:

- speedometer
- memory recall
- harness for power, ground and back lighting

GPSSQ310X antenna

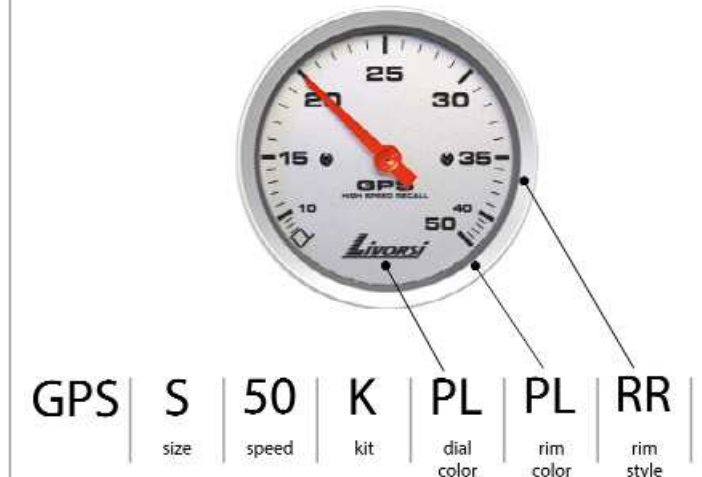
- Mounts with a 1/4" screw
- Dimensions: 2 3/4" L x 2 3/8" W x 7/8" H
- Fast 10 Hz 10x per second update
- 4 ft harness and ring terminals

GPS Speedometer Kit includes

- speedometer
- memory recall
- harness for power, ground and back lighting
- NMEA 0183 antenna - GPSSQ310X



Build your part number:



Description	Part Number		Requires
	3 3/8"	4 5/8"	
50 MPH	GPSS50	GPSL50	For a GPS Kit, add the letter "K" after the MPH.
60 MPH	GPSS60	GPSL60	
80 MPH	GPSS80	GPSL80	
100 MPH	GPSS100	GPSL100	
120 MPH	GPSS120	GPSL120	
140 MPH	GPSS140	GPSL140	
160 MPH	GPSS160	GPSL160	
180 MPH	GPSS180	GPSL180	
200 MPH	GPSS200	GPSL200	
GPS antenna	GPSSQ310X	NMEA 0183 antenna - square body	

Mega & Race Series

GPS Speedometers



50 MPH



60 MPH



80 MPH



100 MPH



120 MPH



140 MPH



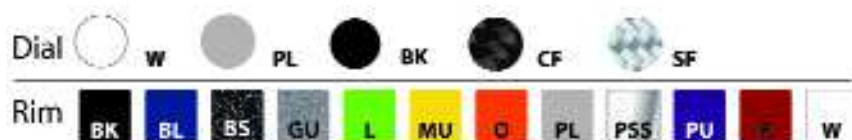
160 MPH



180 MPH



200 MPH



Mega & Race Series

Speedometers



DCMS60



DCMS80



DCMS100

Visit www.livorsi.com
for a list of pitot tubes.

Dry Speedometers

Description	Part Number		Requires
	3 3/8"	4 5/8"	
60 MPH	DCMS60		pitot tube, hose & mounts
80 MPH	DCMS80	DCML80	
100 MPH	DCMS100	DCML100	Add "K1" for a kit



Speedometer Hoses

Description	Part Number
1/8" ID push on high pressure	GCH1/8
1/4" ID push on high pressure	GCH1/4

You may request dials in any of our
powdercoat colors, extra fees apply.



Mechanical Speedometer Hardware

Mechanical Speedometers



Recoil Blade Kickup

Description	Part Number
blade only 5"	GCRB
blade fitting 1/4" ID hose	GCF8
blade fitting 1/8" ID hose	GCPM1/8



Low Profile Blade Assembly

Description	Part Number
regular	GCRB1A
90° angle	GCRB1A90



Blade Assembly Standard

Description	Part Number
universal bolt pattern	GCM1A
Mercury bolt pattern	GCM2A



Mercury Reverse Mount Assembly

Description	Part Number
with fittings	GLRMA
with out fittings	GLRM



Kick Up Mount

Description	Part Number
1/4" ID hose	GLM1A
1/8" ID hose	GLM1A1/8

Blades

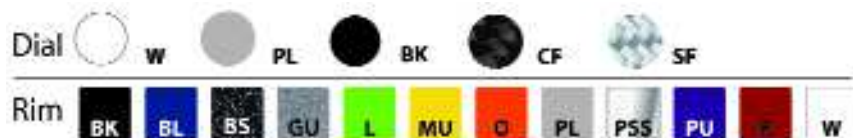
standard blade 7"	GCT1
blade 5" for GCRB1A / RBM2A	GCRB
Thru hull fittings	
2" x 1/8" NPT	THF21/8
4" X 1/8" NPT	THF41/8
90° fitting 1/8" NPT male push lock x 1/4" ID push lock	GCF6
Blade mounts	
tube or blade mount	GCM3
Hoses	
1/8" ID push on high pressure	GCH1/8
1/4" ID push on high pressure	GCH1/4

Mega & Race Series

Electric Gauges

- These electric gauges require the use of a four pin connector wire harness (unless otherwise noted) that we call a DCH harness.
- We offer these harnesses pre-assembled with labeled wire leads, 24 inches in length.

Description	Part Number		Requires
	2 1/16"	2 5/8"	
Clock	-	DCC	DCH harness
Fuel Level 0-90 ohms	DCSFLGM	DCFLGM	DCH, fuel level sender
Fuel Level 240-33 ohms	DCSFL	DCFL	DCH, fuel level sender
Fuel Pressure 0-15 PSI	DCSFP	DCFP	DCH, GSFP/WP
Fuel Pressure 0-90 PSI	DCSFP90	DCFP90	DCH, GSFP60/90
Hourmeter	HM	-	-
Oil Pressure 0-80 PSI	DCSOP80	DCOP80	DCH, GSOP80
Oil Pressure 0-100 PSI	DCSOP	DCOP	DCH, GSOP
Oil Temperature 140-340° F	DCSOT	DCOT	DCH, GSOT1/8
Transmission Temp 140-340° F	DCSTT	DCTT	DCH, GSOT1/8
Trimmer Merc & Yamaha 10-90 ohms	DCSTMM	DCTMM	DCH
Trimmer OMC 88-1 ohms	DCSTMO	DCTMO	DCH
Voltmeter 8-18V	DCSVM	DCVM	DCH
Water Level	DCSWL	DCWL	DCH
Water Temperature 100-250° F	DCSWTA	DCWTA	DCH, GSOT1/8
Water Temperature 100-280° F	DCSWT	DCWT	DCH, GSOT1/8
DCH Harnesses			
12 volt system, 24 inch leads	DCH		
24 volt system, 24 inch leads	DCH24		



Mega & Race Series

Electric Gauges



clock



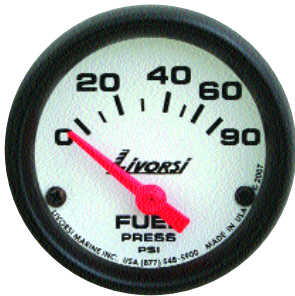
oil pressure 80 PSI



fuel level



fuel pressure 15 PSI



fuel pressure 90 PSI



hourmeter



oil pressure 100 PSI



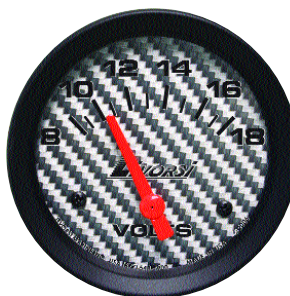
oil temperature



transmission temperature



trimmer



voltmeter



water level



water temperature 250 F

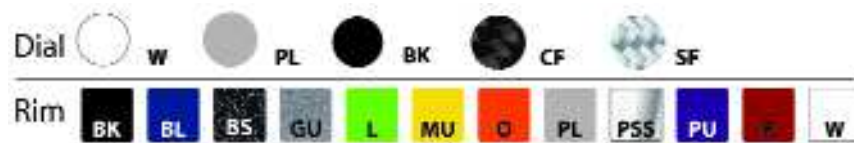


water temperature 280 F

Mega & Race Series

Mechanical Gauges

Description	Part Number		Requires
	2 1/16"	2 5/8"	
Boost 0-35 PSI	DCSMB35	DCMB35	hose kit
Fuel Pressure 0-15 PSI	DCSMFP	DCMFP	
Fuel Pressure 0-100 PSI	DCSMFP100	DCMFP100	fuel hoses n/a
Oil Pressure 0-100 PSI	DCSMOP	DCMOP	
Vacuum/Boost 30 in hg/boost 20	DCSMVB	DCMVB	hose kit
Water Pressure 0-35 PSI	DCSMWP	DCMWP	
Water Pressure 0-60 PSI	DCSMWP60	DCMWP60	hose kit



Hose Kit

- not for fuel
- use with mechanical gauges
- 1/8" ID

Description	Part Number
25 feet with fittings	HK
10 feet with fittings	HKA



boost



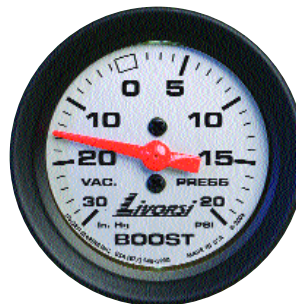
fuel pressure 15 PSI



fuel pressure 100 PSI



oil pressure 100 PSI



vacuum boost



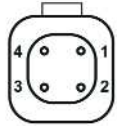
water pressure 35 PSI



water pressure 60 PSI

4 Pin Connector & Wire Harness

- 24 inches in length
- Pre-assembled and labeled



Pin # 1 = BLUE 12v+ illumination
Pin # 2 = VIOLET 12v+ ignition power
Pin # 3 = BLACK engine or battery ground
Pin # 4 = GREEN signal from sender



DCH Harness	Part Number
12 volt system	DCH
24 volt system	DCH24
12 volts w/ tach filter	DCTFH

Connector Parts	
Description	Part Number
2 Pin - mechanical lights	
2 pin connector plug	DC2CPLUG
2 pin connector wedge lock	DC2CWL
4 Pin - electrical gauges	
4 pin connector plug	DC4CPLUG
4 pin connector wedge lock	DC4CWL
8 Pin - power distribution	
8 pin connector plug	DC8CPLUG
8 pin connector wedge lock	DC8CWL
12 Pin - power distribution	
12 pin connector plug	DC12CPLUG
12 pin connector wedge lock	DC12CWL
dummy plug	DCDP
contacts for 16 gauge wire	DCC1416
Hand Crimper	DCHCS

Description	Part Number
Senders	
Fuel Pressure 0-60 PSI / 0-90 PSI	GSFP60/90
Fuel & Water Pressure 0-15 PSI	GSFP/WP
Isolated Ground for Water Temperature	GSWT1/8I
Oil Pressure 0-80 PSI	GSOP80
Oil Pressure 0-100 PSI	GSOP
Oil / Water Temperature 100-320°F Water Temperature 100-250°F 1/8" thread	GSOT1/8
Pressure 400 PSI	GSP400
Water Temperature- Merc OB Kit	GSWTM
Water Temperature 100-280°F 1/8" thread	GSWT1/8
Bushing Kit 1 /4", 3/8" and 1/2" fittings	GSBKK1
Hose Kit for Mechanical Gauges not to be used with fuel, 1/8 in ID	
10 feet of hose and fittings	HKA
25 feet of hose and fittings	HK

Description	Part Number
LED Wedge	
amber 12.8V	LEDWA
blue 12.8V	LEDWBL
green 12.8V	LEDWG
red 12.8V	LEDWRB
white 12.8V	LEDWW
Clamshells	
for 1/4" id hose black	GCCS1/4BK
for 1/4" id hose white	GCCS1/4W
for 1/2" id hose white	GCCS1/2W